

Missoula Interagency Dispatch Zone Run Card Response Aide 2023



THIS PAGE INTENTIONALLY LEFT BLANK

THIS PAGE INTENTIONALLY LEFT BLANK

Table of Contents

Run Card Overview	7
Limited Response Plan Protocol (“Lightning Mode”)	8
Terminology	8
Run Card Daily Responsibilities/Procedures	9
MDC Responsibilities.....	9
Duty Officer Responsibilities	9
Resources Responsibilities	9
ERC, BI, and RL Tables	10
Missoula Dispatch Zone Response Areas	11
RunCards.....	13
West Zone – Plains & Thompson Falls Ranger District (D5).....	15
5-PLNO D5 – Plains North	16
5-PLNE D5 – Plains Northeast	17
5-PLSE D5 – Plains Southeast	18
5-PLSW D5 – Plains Southwest	19
5-PLWE D5 – Plains West	20
5-TFLN D5 – Thompson Falls North	21
5-TFLC D5 – Thompson Falls Central	22
5-TFLS D5 – Thompson Falls South	23
West Zone – Superior Ranger District (D7).....	25
7-WENO D7 – West End North	26
7-STRE D7 – Saint Regis Area WUI	27
7-DBGA D7 – West End (Saltese / Haugan / De Borgia) WUI.....	28
7-WESO D7 – West End South	29
7-EESO D7 – East End South.....	30
7-SUPR D7 – Superior Area WUI.....	31
7-EENO D7 – East End North.....	32
Central Zone – Ninemile Ranger District (D4).....	33
4-9MIL D4 – 9Mile Mountains	34
4-9MVY D4 – 9Mile Valley	35
4-STRK D4 – Stark Mountain.....	36
4-NFSH D4 – North Fish Creek	37
4-GRBN D4 – Great Burn	38
4-SFSH D4 – South Fish Creek	39
4-BRDT D4 – Burdette	40
4-WPTY D4 – West Petty Creek	41
4-EPTY D4 – East Petty Creek.....	42
4-ALBR D4 – Albert Point	43
4-WSSR D4 – West Southside.....	44
4-LG04FT D4 – Frenchtown County Response	45

Central Zone – Missoula Ranger District (D3)	47
3-WES1 D3 – Blue Mountain	48
3-WES2 D3 – Lolo Creek North	50
3-WES3 D3 – Lolo Creek South	52
3-WES4 D3 – Graves Creek	54
3-SFLL D3 – South Fork Lolo Cr	56
3-NOR1 D3 – Butler-Marshall	58
3-NOR2 D3 – Rattlesnake Wilderness	60
3-SOU1 D3 – Pattee Canyon	62
3-SOU2 D3 – Miller-Swartz	64
3-SOU3 D3 – Beavertail South	66
3-SOU4 D3 – Welcome Cr Wilderness	68
3-SOU5 D3 – Rock Creek West	70
Central Zone – Missoula Unit (MSO)	75
M-PTY MSO – Petty	76
M-H12 MSO – HWY 12	77
M-SSR MSO – South Side	78
M-WDH MSO – Wildhorse	79
M-FTF MSO – Frenchtown Face	80
M-WML MSO – West Mill Creek	81
M-MLC MSO – Mill Creek	82
M-MNS MSO – Missoula North Side	83
M-SOU MSO – South	84
M-MLR MSO – Miller Creek	85
M-BIT MSO – Bitterroot	86
M-CFE MSO – Clark Fork East	87
M-200 MSO – HWY 200	88
M-UGC MSO – Upper Gold Creek	89
Central Zone – Missoula County Response (LG04)	91
LG4LOL Missoula County Response	92
LG4MSO Missoula County Response	92
East Zone – Clearwater Unit (CLW)	93
C-WEST CLW - West	94
C-STH CLW - South	95
C-EAST CLW - East	96
C-NRTH CLW - North	97
East Zone – Seeley Ranger District (D6)	99
6-SLNO D6 – Seeley North	100
6-SLSF D6 – Swan Face	101
6-SLCN D6 – Seeley Central	102
6-SLSG D6 – Scape Goat	103
6-SLEA D6 – Seeley East	104
APPENDICIES	105
Appendix A - Call Signs	107
Appendix B – Resource Statusing	109
Appendix C – Arrival Report	109
Appendix D – Dispatch RunCard Script	1

THIS PAGE INTENTIONALLY LEFT BLANK

Run Card Overview

Missoula Interagency Dispatch Zone Run Cards have been established as required by the Northern Rockies Southwest Zone Fire Danger Operating Plan (FDOP). Please refer to the current FDOP and its sub-documents for additional information on their purpose, terminology, and policy.

The Interagency Run Cards are developed by Fire Management and Assistant Fire Management Officers and identify the number and type of resources initially dispatched to a reported wildland fire based on current fire danger criteria, fire management objectives, and resource availability. The Run Cards will be used when a wildfire is reported that falls within the effected dates, operational hours, and does not meet the discretionary smoke report criteria listed below.

Effective Dates: Vary from year to, based on fire activity. Run Cards will become effective for each district/unit when 7-day staffing is implemented or at the unit Fire Management Officer(s) request. Dates typically range from middle to the end of June through the end of September or early October.

Operational Hours: 5-day staffing, 10:00-16:30; 7-day staffing, 10:00-18:00

During Run Cards, Missoula Interagency Dispatch Center (MDC) will dispatch the closest available resource(s) as dictated by the appropriate Run Card, followed by notification to the appropriate Duty Officer. Outside of these conditions, notification of smoke reports will be made from Missoula Interagency Dispatch directly to the appropriate Duty Officer, who will determine the appropriate response.

Cooperators (such as City, County/Rural, or Volunteer Fire Departments), or any other resource not dispatched by MDC, will **not** be considered as part of the pre-planned Run Card response. MDC will not request assistance from Cooperators during initial attack response unless requested by the appropriate Duty Officer or MWCG Incident Commander.

During periods of large/multiple fire activity, when there are not enough resources to fill the Run Cards, the appropriate Duty Officers will be available to Missoula Dispatch to determine incident prioritization and response and may initiate the Limited Response Plan or "Lightning Mode".

Duty Officers will retain the discretion to set their unit to a different response level that indicated, for any given fire day, or to modify the response level for any given incident. When an NWCG qualified Incident Commander is on scene of the fire, they may adjust the pre-established Run Card response as well.

Limited Response Plan Protocol (“Lightning Mode”)

A Duty Officer for a given unit can initiate the Limited Response Plan or declare “Lightning Mode” for any given reason. The most common are:

- A predicted event that could result in multiple starts
- A widespread lightning activity resulting in numerous starts
- Inability to fulfill pre-established Run Cards due to staffing

During the Limited Response Plan, the appropriate Duty Officer(s) will provide guidance to and coordinate with MDC for initial response to new starts, as well as prioritization of incidents. A Local Multi-Agency Coordinating (LMAC) Group call may be initiated. Once a unit or district makes the decision to go into a Limited Response Plan, the corresponding districts/units within the zone (West, Central, or East) will follow. If the appropriate Duty Officer is unable to provide coordinated direction, the MDC Floor Supervisor is authorized to determine the fire priorities based on given information and make modifications to the established Run Card response during multiple start events.

Terminology

Response Area: pre-established geographic boundaries encompassing protection areas with similar management objectives, land use, fire load, access, topography, fuel type and loading, etc. May also be referred to as Dispatch Block or RunCard Block.

Dispatch Location: pre-established geographic locations representative of the general area. Fire resources are expected to reference appropriate dispatch locations, followed by a specific or exact location, when calling into service to the area.

Center Point: a center point is established within each Response Area and Dispatch Location. When a fire is reported within a Response Area, WildCAD uses this center point as a reference to determine the closest resource based on their current Dispatch Location, *unless* the resource identifies a more specific location.

Engine: an engine type of 3, 4, 5, or 6 minimally staffed with one qualified Engine Boss, in addition to other wildland firefighters.

Initial Attack Module (IA Mod): a group of wildland firefighters rostered with an Incident Commander of any level. An IA Mod can travel with an engine and/or water tender but if the appropriately qualified individuals to operate the engine or water tender are not present, they will remain an IA Mod.

Chase Truck: a group of firefighters rostered without an IC, traveling in a vehicle that is not an engine, water tender, etc.

Discretionary Smoke Report: When any of the following smoke reports are received, the Run Card response will not be initiated. Instead, the appropriate Duty Officer will be contacted to determine the response.

- Federal Aviation Administration (FAA) Report.
- Abandoned Campfires, when clearly stated that it is still within the ring.
- Incidents local volunteer fire departments have responded/are on scene and are requesting no additional resources.

WUI: Wildland Urban Interface

Run Card Daily Responsibilities/Procedures

Below is a brief overview of some of the daily procedures expected of Missoula Dispatch and fire resources to facilitate proper Run Card response and functionality. These are not all encompassing but meant to provide examples on some inputs needed for the successful implementation of Run Cards.

MDC Responsibilities

- MDC uses WildCAD, a computer assisted dispatching application specific to the wildland fire industry, to dispatch and track resources. For Run Cards to be functional within WildCAD, maps with Response Areas and Dispatch Locations must be updated yearly, if changes occur. WildCAD then utilizes these as reference points to determine the applicable Run Card for and closest resources to a reported incident.
- MDC will reference Daily Resource Status Page and put all identified resources available quarters in WildCAD by 1000, unless otherwise statused via radio prior to 1000. MDC will call the appropriate Duty Officer if the Resource Status Page has not been updated by 1000 daily.
- Set Dispatch Response Levels in WildCAD once a day by 1600 based on the afternoon observed indices. See chart on page 10 for how Dispatch Response Levels are determined.
 - Designated Dispatch Response Level (Low, Moderate, High) determines what portion of the Run Card to “read” and the number and type of resources in the pre-established response.
- Appropriately status resources as they update dispatch with changes to locations and status.
- Dispatch resources to reported wildland fires using the tone out script.
See Appendix D for example of the MDC RunCard Script.

Duty Officer Responsibilities

- Update Daily Resource Status Summary Page, by 1000, with all fire resources available for the day as well as any out of area resources in zone on assignment.
- Communicate and coordinate with MDC, especially when zone is “Lightning Mode”.

Resources Responsibilities

- Call into service referencing call sign, appropriate Dispatch Location, and specific location.
 - MDC will put resources in service by Call Sign to the designated Dispatch Location while also recording the specific location information provided.
 - When a fire is reported, MDC will look for closest available resources based on their **Dispatch Location**. If resources do not reference a dispatch location when calling into service, the dispatcher will assume resources’ location, thereby creating a potential for that resource to be passed by for another resource who is “correctly” statused and shows closer to incident.
- Update MDC when changing locations
- Update MDC when status changes
- Provide acknowledgement of fire dispatch/tone out upon dispatch checkback
- When on scene of incident provide dispatch with a brief arrival report while preparing a full size up.

See Appendix A for call sign protocols

See Appendix B for resource statusing protocols

See Appendix C for example of arrival report

ERC, BI, and RL Tables

ERC Decision Threshold Ranges in all FDRAs:

Decision Threshold Ranges	Lolo DNRC East	Lolo DNRC West	CSKT East	CSKT West	Bitterroot Low	Bitterroot High
Low-PL 1 1 0% - <40%	0-21.9	0-23.9	0-20.9	0-31.9	0-23.9	0-16.9
Moderate-PL 2 >40% - <80%	22-39.9	24-41.9	21-32.9	32-49.9	24-42.9	17-39.9
High-PL 3 >80% - <90%	40-45.9	42-47.9	33-37.9	50-56.9	43-47.9	40-45.9
Very High-PL 4 >90% - <97%	46-51.9	48-54.9	38-43.9	57-64.9	48-52.9	46-50.9
Extreme-PL 5 >97%	52+	55+	44+	65+	53+	51+

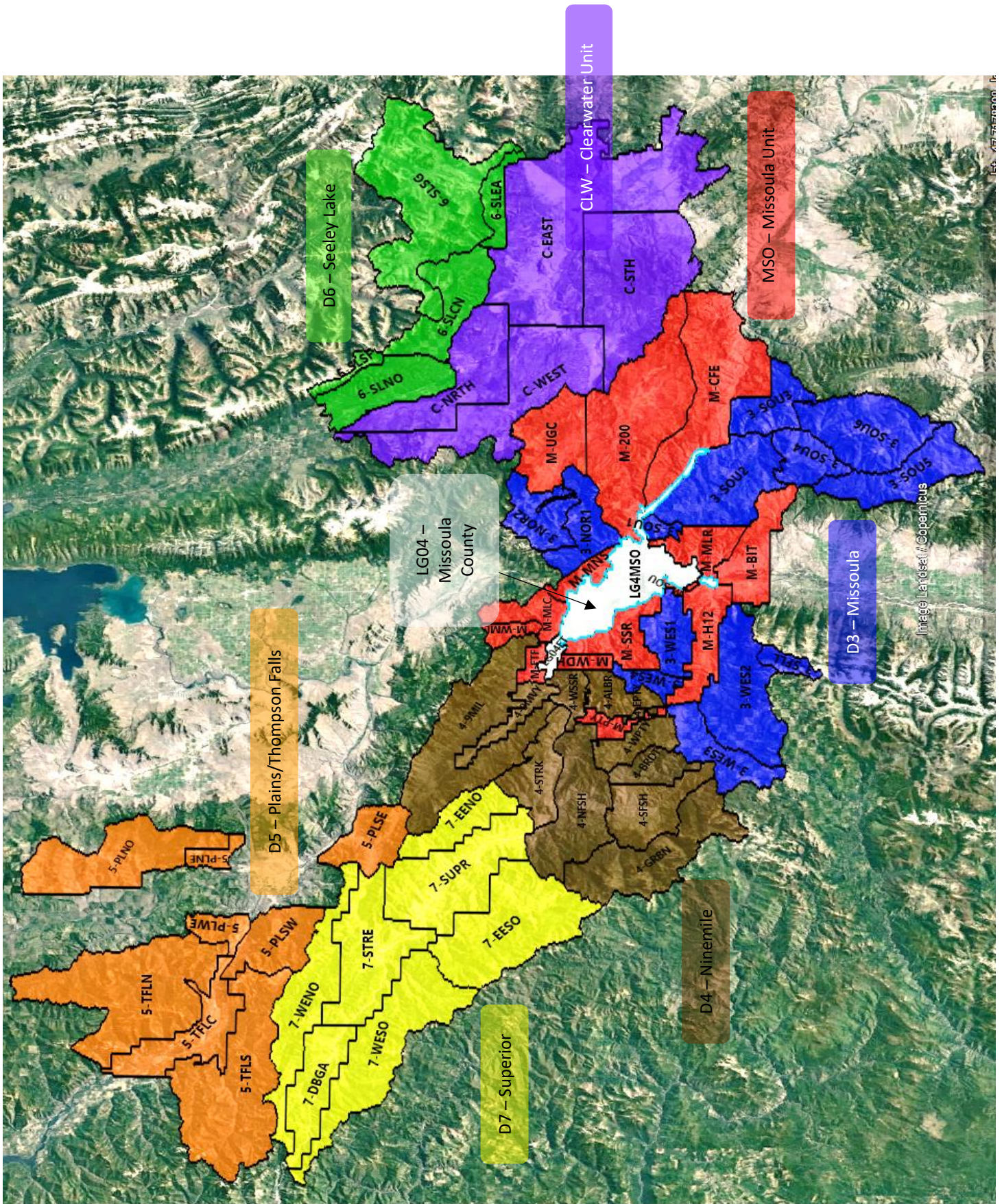
BI Decision Threshold Ranges in all FDRAs:

Decision Threshold Ranges	Lolo DNRC East	Lolo DNRC West	CSKT East	CSKT West	Bitterroot Low	Bitterroot High
Low	0-21.9	0-25.9	0-24.9	0-20.9	0-36.9	0-32.9
Moderate	22-37.9	26-45.9	25-33.9	21-39.9	37-46.9	33-41.9
High >97%	38+	46+	34+	40+	47+	42+

Dispatch Response Level Matrix:

BI Class	H	Low	Low	Mod	High	High+
	M	Low	Low	Mod	Mod	High
	L	Low	Low	Low	Mod	Mod
		1	2	3	4	5
		ERC Class				

Missoula Dispatch Zone Response Areas



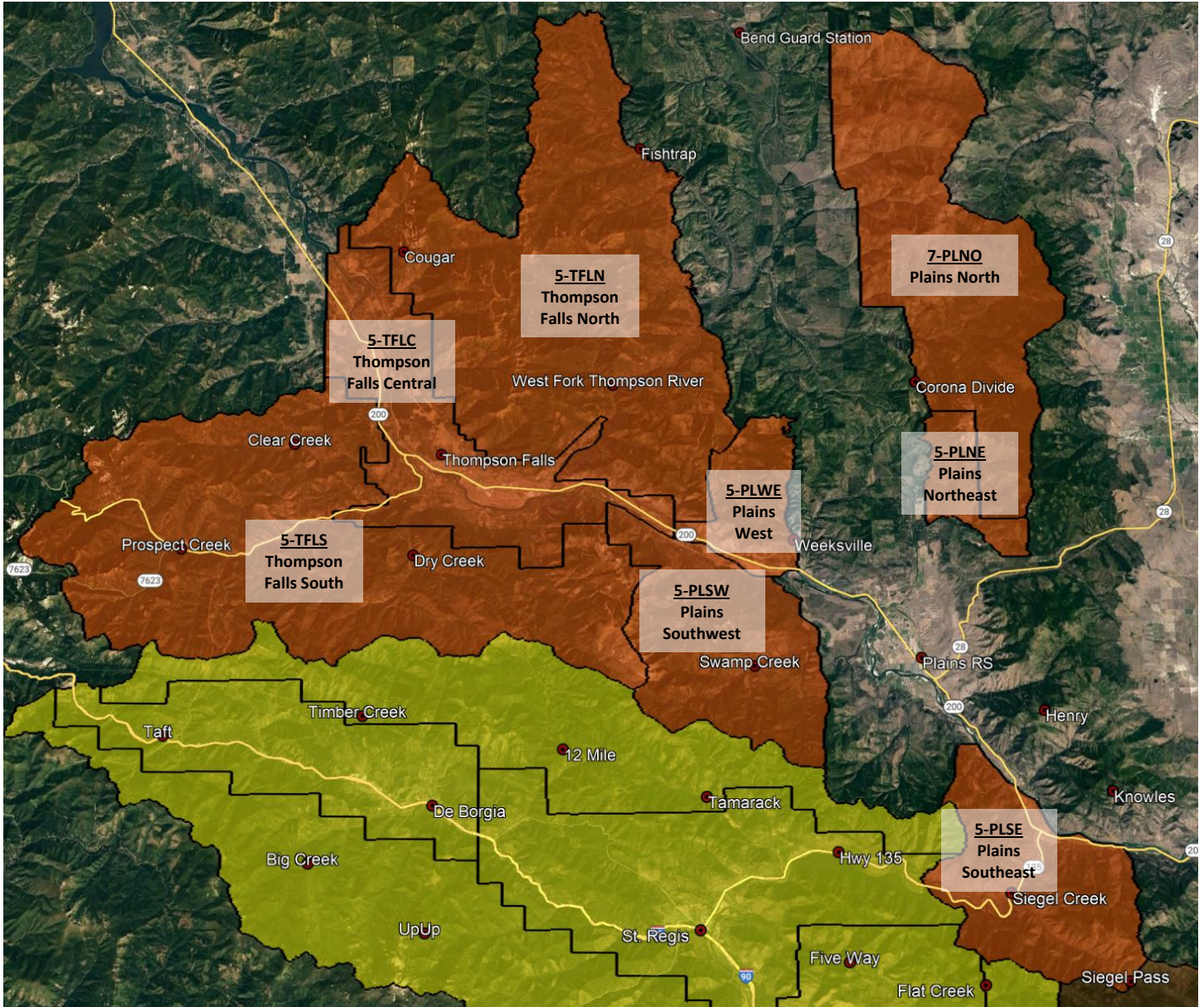
THIS PAGE INTENTIONALLY LEFT BLANK

RunCards

THIS PAGE INTENTIONALLY LEFT BLANK

West Zone – Plains & Thompson Falls Ranger District (D5)

Lolo National Forest



5-PLNO D5 – Plains North

AGENCY	UNIT	DISPATCH BLOCK #	DISPATCH BLOCK NAME	FDRA	RADIO GROUP	CENTER POINT
USFS	D5	5-PLNO	Plains North	Lolo DNRC West	West Zone	Corona Divide N47° 38.967' x W114° 52.476'

DISPATCH RESPONSE LEVEL	LOW	MODERATE	HIGH
FIRE RESPONSE <i>at minimum</i>	Notify Duty Officer	1 IA Module	1 Engine 1 IA Module

DISPATCH COMMENTS

<p>SHARED BOUNDARY:</p> <ul style="list-style-type: none"> Determine if Sanders County 911 has dispatched local fire resources. Notify responding resources of Rural Fire Department's status. If smoke report is within 1 mile of DNRC or CSKT protection, notify appropriate Dispatch Center
<p>IF AIRCRAFT IS ORDERED:</p> <ul style="list-style-type: none"> Ensure helicopter is (or can be) configured to air drop water on the fire (bucket or tank).
<p>KNOWN HAZARDS:</p> <ul style="list-style-type: none"> Unknown
<p>NOTIFICATIONS:</p> <ul style="list-style-type: none"> District Duty Officer
<p>DUTY OFFICER CONSIDERATIONS:</p> <ul style="list-style-type: none"> Determine if additional resources are necessary. Make standard notifications. If it is a human start, order an INVF. If fire is human caused with criminal potential, order a USFS LEO.

5-PLNE D5 – Plains Northeast

AGENCY	UNIT	DISPATCH BLOCK #	DISPATCH BLOCK NAME	FDRA	RADIO GROUP	CENTER POINT
USFS	D5	5-PLNE	Plains Northeast	Lolo DNRC West	West Zone	Blanchard Corner N47° 33.394' x W114° 52.304'

DISPATCH RESPONSE LEVEL	LOW	MODERATE	HIGH
FIRE RESPONSE at minimum	Notify Duty Officer	1 IA Module	1 Engine 1 IA Module

DISPATCH COMMENTS

SHARED BOUNDARY:

- Determine if Sanders County 911 has dispatched local fire resources
- Notify responding resources of local fire resources status
- DNRC Plains Unit (PLN)
- Confederated Salish & Kootenai Tribes (CSKT - Flathead Agency)

IF AIRCRAFT IS ORDERED:

- Ensure helicopter is (or can be) configured to air drop water on the fire (bucket or tank).

KNOWN HAZARDS:

- BPA 500 kV power lines.

NOTIFICATIONS:

- District Duty Officer
- If smoke report is within 1 nautical mile of DNRC Plains Unit, notify Kalispell Dispatch Center
- If smoke report is within 1 nautical mile of CSKT, notify Ronan Dispatch Center

DUTY OFFICER CONSIDERATIONS:

- Determine if additional resources are necessary.
- Make standard notifications.
- If it is a human start, order an INV. If fire is human caused with criminal potential, order a USFS LEO.

5-PLSE D5 – Plains Southeast

AGENCY	UNIT	DISPATCH BLOCK #	DISPATCH BLOCK NAME	FDRA	RADIO GROUP	CENTER POINT
USFS	D5	5-PLSE	Plains Southeast	Lolo DNRC West	West Zone	Junction of Hwy 135 & 200 N47° 21.3' x W114° 46.7'

DISPATCH RESPONSE LEVEL	LOW	MODERATE	HIGH
FIRE RESPONSE <i>at minimum</i>	Notify Duty Officer	1 IA Module	1 Engine 1 IA Module

DISPATCH COMMENTS

<p>SHARED BOUNDARY:</p> <ul style="list-style-type: none"> Determine if Sanders County 911 has dispatched local fire resources Notify responding resources of local fire resources status. DNRC Plains Unit (PLN) Confederated Salish & Kootenai Tribes (CSKT - Flathead Agency)
<p>IF AIRCRAFT IS ORDERED:</p> <ul style="list-style-type: none"> Ensure helicopter is (or can be) configured to air drop water on the fire (bucket or tank).
<p>KNOWN HAZARDS:</p> <ul style="list-style-type: none"> BPA 500 kV power lines.
<p>NOTIFICATIONS:</p> <ul style="list-style-type: none"> District Duty Officer If smoke report is within 1 nautical mile of DNRC Plains Unit, notify Kalispell Dispatch Center If smoke report is within 1 nautical mile of CSKT, notify Ronan Dispatch Center
<p>DUTY OFFICER CONSIDERATIONS:</p> <ul style="list-style-type: none"> Determine if additional resources are necessary. Make standard notifications. If it is a human start, order an INV. If fire is human caused with criminal potential, order a USFS LEO.

5-PLSW D5 – Plains Southwest

AGENCY	UNIT	DISPATCH BLOCK #	DISPATCH BLOCK NAME	FDRA	RADIO GROUP	CENTER POINT
USFS	D5	5-PLSW	Plains Southwest	Lolo DNRC West	West Zone	Swamp Creek N47° 27.7' x W115° 2.5'

DISPATCH RESPONSE LEVEL	LOW	MODERATE	HIGH
FIRE RESPONSE <i>at minimum</i>	Notify Duty Officer	1 IA Module	1 Engine 1 IA Module

DISPATCH COMMENTS

SHARED BOUNDARY:

- Determine if Sanders County 911 has dispatched local fire resources
- Notify responding resources of local fire resources status.
- DNRC Plains Unit (PLN)

IF AIRCRAFT IS ORDERED:

- Ensure helicopter is (or can be) configured to air drop water on the fire (bucket or tank).

KNOWN HAZARDS:

- BPA 500 kV power lines.

NOTIFICATIONS:

- District Duty Officer
- If smoke report is within 1 nautical mile of DNRC Plains Unit, notify Kalispell Dispatch Center

DUTY OFFICER CONSIDERATIONS:

- Determine if additional resources are necessary.
- Make standard notifications.
- If it is a human start, order an INV. If fire is human caused with criminal potential, order a USFS LEO.

5-PLWE D5 – Plains West

AGENCY	UNIT	DISPATCH BLOCK #	DISPATCH BLOCK NAME	FDRA	RADIO GROUP	CENTER POINT
USFS	D5	5-PLWE	Plains West	Lolo DNRC West	West Zone	5587 & 887 Road Junction N47° 34.1' x W115° 0.3'

DISPATCH RESPONSE LEVEL	LOW	MODERATE	HIGH
FIRE RESPONSE at minimum	Notify Duty Officer	1 IA Module	1 Engine 1 IA Module

DISPATCH COMMENTS

SHARED BOUNDARY:

- Determine if Sanders County 911 has dispatched local fire resources
- Notify responding resources of local fire resources status.
- DNRC Plains Unit (PLN)

IF AIRCRAFT IS ORDERED:

- Ensure helicopter is (or can be) configured to air drop water on the fire (bucket or tank).

KNOWN HAZARDS:

- BPA 500 kV power lines.

NOTIFICATIONS:

- District Duty Officer
- If smoke report is within 1 nautical mile of DNRC Plains Unit, notify Kalispell Dispatch Center

DUTY OFFICER CONSIDERATIONS:

- Determine if additional resources are necessary.
- Make standard notifications.
- If it is a human start, order an INVF. If fire is human caused with criminal potential, order a USFS LEO.

5-TFLN D5 – Thompson Falls North

AGENCY	UNIT	DISPATCH BLOCK #	DISPATCH BLOCK NAME	FDRA	RADIO GROUP	CENTER POINT
USFS	D5	5-TFLN	Thompson Falls North	Lolo DNRC West	West Zone	West Fork Thompson River N47° 39.0' x W115° 10.4'

DISPATCH RESPONSE LEVEL	LOW	MODERATE	HIGH
FIRE RESPONSE <i>at minimum</i>	Notify Duty Officer	1 IA Module	1 Engine 1 IA Module

DISPATCH COMMENTS

<p>SHARED BOUNDARY:</p> <ul style="list-style-type: none"> Determine if Sanders County 911 has dispatched local fire resources Notify responding resources of local fire resources status. DNRC Plains Unit (PLN) Kootenai National Forest
<p>IF AIRCRAFT IS ORDERED:</p> <ul style="list-style-type: none"> Ensure helicopter is (or can be) configured to air drop water on the fire (bucket or tank)
<p>KNOWN HAZARDS:</p> <ul style="list-style-type: none"> Unknown
<p>NOTIFICATIONS:</p> <ul style="list-style-type: none"> District Duty Officer If smoke report is within 1 nautical mile of DNRC Plains Unit, notify Kalispell Dispatch If smoke report is within 1 nautical mile of Kootenai National Forest, notify Kootenai Dispatch
<p>DUTY OFFICER CONSIDERATIONS:</p> <ul style="list-style-type: none"> Determine if additional resources are necessary. Make standard notifications. If it is a human start, order an INVF. If fire is human caused with criminal potential, order a USFS LEO.

5-TFLC D5 – Thompson Falls Central

AGENCY	UNIT	DISPATCH BLOCK #	DISPATCH BLOCK NAME	FDRA	RADIO GROUP	CENTER POINT
USFS	D5	5-TFLC	Thompson Falls Central	Lolo DNRC West	West Zone	Thompson Falls Work Center N47° 36.2' x W115° 20.6'

DISPATCH RESPONSE LEVEL	LOW	MODERATE	HIGH
FIRE RESPONSE <i>at minimum</i>	Notify Duty Officer	1 IA Module	1 Engine 1 IA Module

DISPATCH COMMENTS

SHARED BOUNDARY:

- Determine if Sanders County 911 has dispatched county fire resources
- Notify responding resources of county fire resources status.
- If smoke report is within 1 mile of Kootenai NF protection, notify Kootenai Dispatch Center (MT-KDC)

IF AIRCRAFT IS ORDERED:

- Ensure helicopter is (or can be) configured to air drop water on the fire (bucket or tank)

KNOWN HAZARDS:

- BPA 500 kV power lines.

NOTIFICATIONS:

- District Duty Officer
- If smoke report is within 1 nautical mile of Kootenai National Forest, notify Kootenai Dispatch

DUTY OFFICER CONSIDERATIONS:

- Determine if additional resources are necessary.
- Make standard notifications.
- If it is a human start, order an INVF. If fire is human caused with criminal potential, order a USFS LEO.

5-TFLS D5 – Thompson Falls South

AGENCY	UNIT	DISPATCH BLOCK #	DISPATCH BLOCK NAME	FDRA	RADIO GROUP	CENTER POINT
USFS	D5	5-TFLS	Thompson Falls South	Lolo DNRC West	West Zone	Clear Creek N47° 36.7' x W115° 29.2'

DISPATCH RESPONSE LEVEL	LOW	MODERATE	HIGH
FIRE RESPONSE at minimum	Notify Duty Officer	1 IA Module	1 Engine 1 IA Module

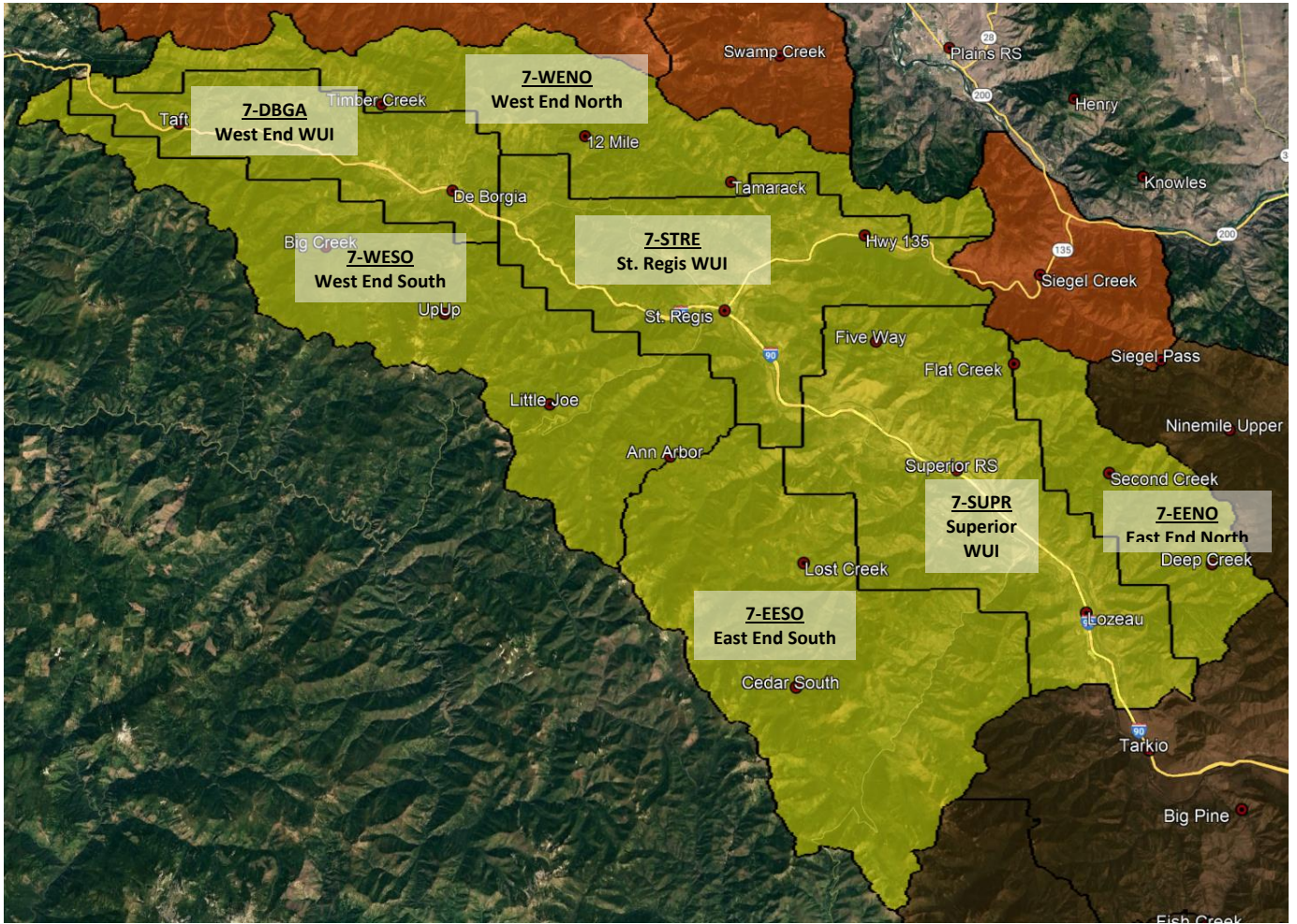
DISPATCH COMMENTS

<p>SHARED BOUNDARY:</p> <ul style="list-style-type: none"> • Kootenai National Forest • Idaho Panhandle National Forest
<p>IF AIRCRAFT IS ORDERED:</p> <ul style="list-style-type: none"> • Ensure helicopter is (or can be) configured to air drop water on the fire (bucket or tank)
<p>KNOWN HAZARDS:</p> <ul style="list-style-type: none"> • BPA 500 kV power lines.
<p>NOTIFICATIONS:</p> <ul style="list-style-type: none"> • District Duty Officer • If smoke report is within 1 mile of Kootenai National Forest, notify Kootenai Dispatch Center • If smoke report is within 1 mile of Idaho Panhandle NF protection, notify Coeur d’Alene Dispatch Center
<p>DUTY OFFICER CONSIDERATIONS:</p> <ul style="list-style-type: none"> • Determine if additional resources are necessary. • Make standard notifications. • If it is a human start, order an INVF. If fire is human caused with criminal potential, order a USFS LEO.

THIS PAGE INTENTIONALLY LEFT BLANK

West Zone – Superior Ranger District (D7)

Lolo National Forest



7-WENO D7 – West End North

AGENCY	UNIT	RESPONSE AREA #	RESPONSE AREA NAME	FDRA	RADIO GROUP	CENTER POINT
USFS	D7	7-WENO	West End North	Lolo DNRC West	West Zone	Dry Fork & Tamarack Junction N47° 22.7' x 115° 5.4'

DISPATCH RESPONSE LEVEL	LOW	MODERATE	HIGH
FIRE RESPONSE at minimum	Notify Duty Officer	1 IA Module	1 Engine 1 IA Module 1 Helicopter

DISPATCH COMMENTS

SHARED BOUNDARY:

- Idaho Panhandle National Forest
- DNRC Plains Unit (PLN)

IF AIRCRAFT IS ORDERED:

- Ensure helicopter is (or can be) configured to air drop water on the fire (bucket or tank)
- Big Creek Gravel Pit is available for initial and extended attack
N47° 22.499' x W115° 23.998'

KNOWN HAZARDS:

- BPA 500 kV power lines run east-west through the length of the Response Zone.
- BPA 500 kV power lines run north-south through the west portion of the Response Zone

NOTIFICATIONS:

- District Duty Officer
- If smoke report is within 2 nautical miles of the MT-ID state line, notify Coeur d'Alene Dispatch Center
- If smoke report is within 1 nautical mile of DNRC Plains Unit, notify Kalispell Dispatch Center

DUTY OFFICER CONSIDERATIONS:

- Determine if additional resources are necessary
- Make standard notifications
- If it is a human start, order an INVF. If fire is human caused with criminal potential, order a USFS LEO

7-STRE D7 – Saint Regis Area WUI

AGENCY	UNIT	RESPONSE AREA #	RESPONSE AREA NAME	FDRA	RADIO GROUP	CENTER POINT
USFS	D7	7-STRE	St. Regis Area WUI	Lolo DNRC West	West Zone	St. Regis I-90 exit 33 N47° 17.8' x W115° 5.9'

DISPATCH RESPONSE LEVEL	LOW	MODERATE	HIGH
FIRE RESPONSE at minimum	Notify Duty Officer	1 IA Module	1 Engine 1 IA Module 1 Helicopter

DISPATCH COMMENTS

SHARED BOUNDARY:

- Determine if Mineral County 911 has dispatched county fire resources
- Notify responding resources of county fire resources status
- Plains-Thompson Falls Ranger District (D5)

IF AIRCRAFT IS ORDERED:

- Ensure helicopter is (or can be) configured to air drop water on the fire (bucket or tank)
- St. Regis Helibase available for initial and extended attack
N47° 18.259' x W115° 06.478'

KNOWN HAZARDS:

- BPA 500 kV power lines are near and occasionally in the Response Zone

NOTIFICATIONS:

- District Duty Officer
- If smoke report is within 1 nautical mile of Plain-Thompson Falls Ranger District, notify the appropriate Duty Officer

DUTY OFFICER CONSIDERATIONS:

- Determine if additional resources are necessary
- Make standard notifications
- If it is a human start, order an INVF. If fire is human caused with criminal potential, order a USFS LEO

7-DBGA D7 – West End (Saltese / Haugan / De Borgia) WUI

AGENCY	UNIT	RESPONSE AREA #	RESPONSE AREA NAME	FDRA	RADIO GROUP	CENTER POINT
USFS	D7	7-DBGA	West End WUI	Lolo DNRC West	West Zone	De Borgia I-90 exit 18 N47° 22.5' x W115° 20.9'

DISPATCH RESPONSE LEVEL	LOW	MODERATE	HIGH
FIRE RESPONSE <i>at minimum</i>	Notify Duty Officer	1 IA Module	1 Engine 1 IA Module 1 Helicopter

DISPATCH COMMENTS

SHARED BOUNDARY:

- Determine if Mineral County 911 has dispatched county fire resources
- Notify responding resources of county fire resources status
- Idaho Panhandle National Forest

IF AIRCRAFT IS ORDERED:

- Ensure helicopter is (or can be) configured to air drop water on the fire (bucket or tank)
- Big Creek Gravel Pit is available for initial and extended attack
N47° 22.499' x W115° 23.998'

KNOWN HAZARDS:

- BPA 500 kV power lines are near and occasionally are in the response area.
- BPA 500 kV power lines cross I-90 near Rainy Creek in the response area

NOTIFICATIONS:

- District Duty Officer
- If smoke report is within 2 nautical miles of the MT-ID state line, notify Coeur d'Alene Dispatch Center

DUTY OFFICER CONSIDERATIONS:

- Determine if additional resources are necessary
- Make standard notifications
- If it is a human start, order an INVF. If fire is human caused with criminal potential, order a USFS LEO

7-WESO D7 – West End South

AGENCY	UNIT	RESPONSE AREA #	RESPONSE AREA NAME	FDRA	RADIO GROUP	CENTER POINT
USFS	D7	7-WESO	West End South	Lolo DNRC West	West Zone	Newman Ridge N47° 17.1' x W115° 14.9'

DISPATCH RESPONSE LEVEL	LOW	MODERATE	HIGH
FIRE RESPONSE at minimum	Notify Duty Officer	1 IA Module	1 Engine 1 IA Module 1 Helicopter

DISPATCH COMMENTS

<p>SHARED BOUNDARY:</p> <ul style="list-style-type: none"> Idaho Panhandle National Forest
<p>IF AIRCRAFT IS ORDERED:</p> <ul style="list-style-type: none"> Ensure helicopter is (or can be) configured to air drop water on the fire (bucket or tank) Big Creek Gravel Pit is available for initial and extended attack N47° 22.499' x W115° 23.998' St Regis Helibase available for initial and extended attack N47° 18.259' x W115° 06.478'
<p>KNOWN HAZARDS:</p> <ul style="list-style-type: none"> BPA 500 kV power lines run NW-SE through the west portion of the response area
<p>NOTIFICATIONS:</p> <ul style="list-style-type: none"> District Duty Officer If the smoke report is within 2 nautical miles of the MT-ID state line, notify Coeur d'Alene Dispatch Center
<p>DUTY OFFICER CONSIDERATIONS:</p> <ul style="list-style-type: none"> Determine if additional resources are necessary Make standard notifications If it is a human start, order an INVF. If fire is human caused with criminal potential, order a USFS LEO

7-EESO D7 – East End South

AGENCY	UNIT	RESPONSE AREA #	RESPONSE AREA NAME	FDRA	RADIO GROUP	CENTER POINT
USFS	D7	7-EESO	East End South	Lolo DNRC West	West Zone	Cayuse Saddle N47° 7.6' x W115° 0.2'

DISPATCH RESPONSE LEVEL	LOW	MODERATE	HIGH
FIRE RESPONSE <i>at minimum</i>	Notify Duty Officer	1 IA Module	1 Engine 1 IA Module 1 Helicopter

DISPATCH COMMENTS

SHARED BOUNDARY:

- Idaho Panhandle National Forest
- Nez Perce-Clearwater National Forest
- Ninemile Ranger District (D4)

IF AIRCRAFT IS ORDERED:

- Ensure helicopter is (or can be) configured to air drop water on the fire (bucket or tank)
- Mineral County Airport (9S4) is available for initial attack
N47° 10.092' x W114° 51.229'
- If aircraft does recover overnight at 9S4, a Land Use Agreement needs to be initiated

KNOWN HAZARDS:

- Unknown

NOTIFICATIONS:

- District Duty Officer
- If smoke report is within 2 nautical miles of Idaho Panhandle National Forest, notify Coeur d'Alene Dispatch Center
- If smoke report is within 2 nautical miles of Nez Perce-Clearwater National Forest, notify Grangeville Dispatch Center
- If smoke report is within 2 nautical miles of Ninemile Ranger Station, notify appropriate Duty Officer

DUTY OFFICER CONSIDERATIONS:

- Determine if additional resources are necessary
- Make standard notifications
- If it is a human start, order an INV. If fire is human caused with criminal potential, order a USFS LEO
- Contact MDC if Land Use Agreements are needed
 - Need owner name, address, lat/long of property, phone number, and an email address for dispatch to send resource order

7-SUPR D7 – Superior Area WUI

AGENCY	UNIT	RESPONSE AREA #	RESPONSE AREA NAME	FDRA	RADIO GROUP	CENTER POINT
USFS	D7	7-SUPR	Superior Area WUI	Lolo DNRC West	West Zone	Superior I-90 exit 47 N47° 11.5' x W114° 53.4'

DISPATCH RESPONSE LEVEL	LOW	MODERATE	HIGH
FIRE RESPONSE at minimum	Notify Duty Officer	1 IA Module	1 Engine 1 IA Module 1 Helicopter

DISPATCH COMMENTS

SHARED BOUNDARY:

- Determine if Mineral County 911 has dispatched county fire resources
- Notify responding resources of county fire resources status.
- Ninemile Ranger District (D4)
- Plains-Thompson Falls Ranger District (D5)

IF AIRCRAFT IS ORDERED:

- Ensure helicopter is (or can be) configured to air drop water on the fire (bucket or tank)
- Mineral County Airport (9S4) is available for initial attack
N47° 10.092' x W114° 51.229'
- If aircraft does recover overnight at 9S4, a Land Use Agreement needs to be initiated

KNOWN HAZARDS:

- BPA 500 kV power lines are north of and occasionally are in 7-SUPR Response Zone

NOTIFICATIONS:

- District Duty Officer
- If smoke report is within 1 nautical mile of a district/unit boundary, notify appropriate Duty Officer

DUTY OFFICER CONSIDERATIONS:

- Determine if additional resources are necessary
- Make standard notifications
- If it is a human start, order an INV. If fire is human caused with criminal potential, order a USFS LEO
- Contact MDC if Land Use Agreements are needed
 - Need owner name, address, lat/long of property, phone number, and an email address for dispatch to send resource order

7-EENO D7 – East End North

AGENCY	UNIT	RESPONSE AREA #	RESPONSE AREA NAME	FDRA	RADIO GROUP	CENTER POINT
USFS	D7	7-EENO	East End North	Lolo DNRC West	West Zone	Johnson Creek N47° 12.7' x W114° 48.6'

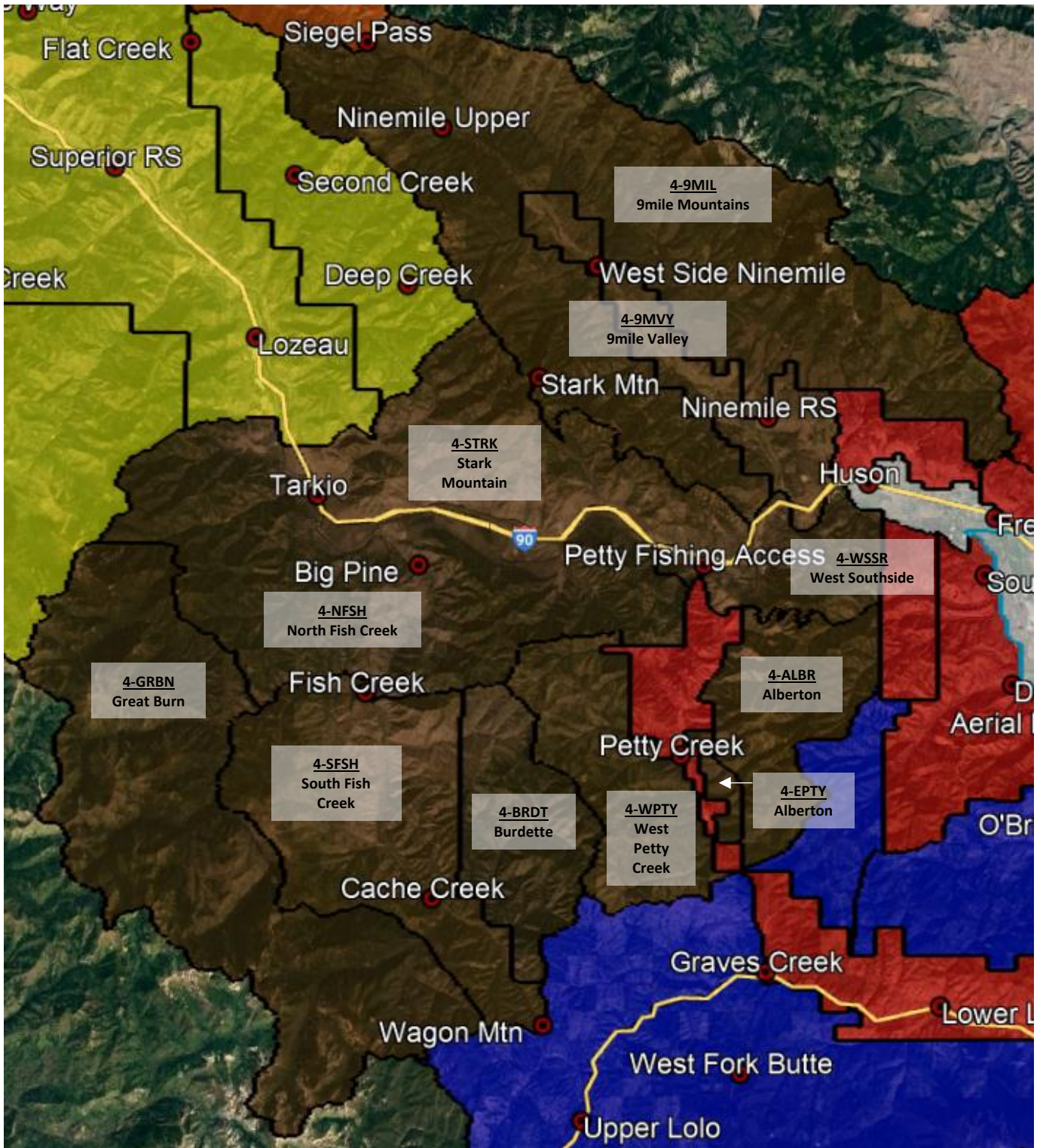
DISPATCH RESPONSE LEVEL	LOW	MODERATE	HIGH
FIRE RESPONSE at minimum	Notify Duty Officer	1 IA Module	1 Engine 1 IA Module 1 Helicopter

DISPATCH COMMENTS

<p>SHARED BOUNDARY:</p> <ul style="list-style-type: none"> Ninemile Ranger District (D4) Plains-Thompson Falls Ranger District (D5)
<p>IF AIRCRAFT IS ORDERED:</p> <ul style="list-style-type: none"> Ensure helicopter is (or can be) configured to air drop water on the fire (bucket or tank) Mineral County Airport (9S4) is available for initial attack N47° 10.092'x W114° 51.229' If aircraft does recover overnight at 9S4, a Land Use Agreement needs to be initiated
<p>KNOWN HAZARDS:</p> <ul style="list-style-type: none"> BPA 500 kV power lines run east-west through the length of the 7-EENO Response Zone
<p>NOTIFICATIONS:</p> <ul style="list-style-type: none"> District Duty Officer If smoke report is 1 nautical mile of a district/unit boundary, notify appropriate Duty Officer
<p>DUTY OFFICER CONSIDERATIONS:</p> <ul style="list-style-type: none"> Determine if additional resources are necessary Make standard notifications If it is a human start, order an INV. If fire is human caused with criminal potential, order a USFS LEO Contact MDC if Land Use Agreements are needed <ul style="list-style-type: none"> Need owner name, address, lat/long of property, phone number, and an email address for dispatch to send resource order

Central Zone – Ninemile Ranger District (D4)

Lolo National Forest



4-9MIL D4 – 9Mile Mountains

AGENCY	UNIT	RESPONSE AREA #	RESPONSE AREA NAME	FDRA	RADIO GROUP	CENTER POINT
USFS	D4	4-9MIL	9Mile Mountains	Lolo DNRC East	Central Zone	Kreis Pond N47° 6.0' x W114° 25.5'

DISPATCH RESPONSE LEVEL	LOW	MODERATE	HIGH
FIRE RESPONSE <i>at minimum</i>	Notify Duty Officer	1 Engine	1 Engine 1 IA Module 1 ICT4

DISPATCH COMMENTS

SHARED BOUNDARY:

- Determine if Missoula County 911 has dispatched county fire resources or notified adjacent counties
- Notify responding resource of county fire resources status
- DNRC Missoula Unit (MSO)
- Confederated Salish & Kootenai Tribes (CSKT – Flathead Agency)
- Superior Ranger District (D7)
- Plains-Thompson Falls Ranger District (D5)

IF AIRCRAFT IS ORDERED:

- Ensure helicopter is (or can be) configured for long line and bucket work.
- Ninemile Airstrip is available for initial attack
N47° 4.6 x W114° 24.9'

KNOWN HAZARDS:

- BPA Powerlines running south and west in the response area.
- Kreis Pond recreational site

NOTIFICATIONS:

- District Duty Officer
- If the smoke report is within 1 nautical miles of district/unit boundary, notify appropriate Duty Officer
- If smoke report is within 1 nautical mile of CSKT, notify Ronan Dispatch Center

DUTY OFFICER CONSIDERATIONS:

- Determine if additional resources are necessary
- Make standard notifications
- If it is a human start, order an INV. If fire is human caused with criminal potential, order a USFS LEO.

4-9MVY D4 – 9Mile Valley

AGENCY	UNIT	RESPONSE AREA #	RESPONSE AREA NAME	FDRA	RADIO GROUP	CENTER POINT
USFS	D4	4-9MVY	9Mile Valley	Lolo DNRC East	Central Zone	N47° 6.2' x W114° 28.8

DISPATCH RESPONSE LEVEL	LOW	MODERATE	HIGH
FIRE RESPONSE at minimum	Notify Duty Officer	1 Engine	1 Engine 1 IA Module 1 ICT4

DISPATCH COMMENTS

SHARED BOUNDARY:

- Missoula County (LG04)
- Determine if Missoula County 911 has dispatched county fire resources or notified adjacent counties
- Notify responding resources of county fire resources status
- DNRC Missoula Unit (MSO)

IF AIRCRAFT IS ORDERED:

- Ensure helicopter is (or can be) configured for long line and bucket work, and/or crew shuttle
- Ninemile Airstrip is available for initial attack
N47° 4.6 x W114° 24.9'

KNOWN HAZARDS:

- Populated WUI area.
- Heavy traffic along main Ninemile Valley Road

NOTIFICATIONS:

- District Duty Officer
- If smoke report is within 2 nautical miles of district/unit boundary, notify appropriate District Duty Officer

DUTY OFFICER CONSIDERATIONS:

- Determine if additional resources are necessary
- Make standard notifications
- If it is a human start, order an INVF. If fire is human caused with criminal potential, order a USFS LEO.

4-STRK D4 – Stark Mountain

AGENCY	UNIT	RESPONSE AREA #	RESPONSE AREA NAME	FDRA	RADIO GROUP	CENTER POINT
USFS	D4	4-STRK	Stark Mountain	Lolo DNRC West	Central Zone	Sheridan Creek N47° 3.9' x W114° 37.3'

DISPATCH RESPONSE LEVEL	LOW	MODERATE	HIGH
FIRE RESPONSE at minimum	Notify Duty Officer	1 Engine	1 Engine 1 IA Module 1 ICT4

DISPATCH COMMENTS

<p>SHARED BOUNDARY:</p> <ul style="list-style-type: none"> Determine if Missoula County 911 has dispatched county fire resources or notified adjacent counties Notify responding resources of county fire resources status Superior Ranger District (D7)
<p>IF AIRCRAFT IS ORDERED:</p> <ul style="list-style-type: none"> Ensure helicopter is (or can be) configured for long line, bucket work and/or crew shuttle Ninemile Airstrip is available for initial attack support N47° 4.6 x W114° 24.9' Sawmill Gulch Helispot is available for initial attack support N47° 58.626' x W114° 31.716'
<p>KNOWN HAZARDS:</p> <ul style="list-style-type: none"> BPA Powerlines running through the middle of the response area Heavy summer traffic along the I-90 corridor
<p>NOTIFICATIONS:</p> <ul style="list-style-type: none"> District Duty Officer If smoke report is within 2 nautical miles of district/unit boundary, notify the appropriate Duty Officer
<p>DUTY OFFICER CONSIDERATIONS:</p> <ul style="list-style-type: none"> Determine if additional resources are necessary Make standard notifications If it is a human start, order an INV. If fire is human caused with criminal potential, order a USFS LEO

4-NFSH D4 – North Fish Creek

AGENCY	UNIT	RESPONSE AREA #	RESPONSE AREA NAME	FDRA	RADIO GROUP	CENTER POINT
USFS	D4	4-NFSH	North Fish Creek	Lolo DNRC West	Central Zone	Big Pine N46° 59.4' x W114° 39.7'

DISPATCH RESPONSE LEVEL	LOW	MODERATE	HIGH
FIRE RESPONSE <i>at minimum</i>	Notify Duty Officer	1 IA Module	1 Engine 1 IA Module

DISPATCH COMMENTS

<p>SHARED BOUNDARY:</p> <ul style="list-style-type: none"> Determine if Missoula County 911 has dispatched county fire resources or notified adjacent counties Notify responding resources of county fire resources status Superior Ranger District (D7) DNRC Missoula Unit (MSO)
<p>IF AIRCRAFT IS ORDERED:</p> <ul style="list-style-type: none"> Ensure helicopter is (or can be) configured for long line, bucket work and/or crew shuttle Ninemile Airstrip is available for initial attack support N47° 4.6 x W114° 24.9' Sawmill Gulch Helispot is available for initial attack support N47° 58.626' x W114° 31.716'
<p>KNOWN HAZARDS:</p> <ul style="list-style-type: none"> Heavy recreational traffic along the main Fish Creek Road in the summer and fall Poor road access in the area Consider aircraft if needed for emergency support
<p>NOTIFICATIONS:</p> <ul style="list-style-type: none"> District Duty Officer If smoke report is within 2 nautical miles of district boundary, notify the appropriate District Duty Officer
<p>DUTY OFFICER CONSIDERATIONS:</p> <ul style="list-style-type: none"> Determine if additional resources are necessary Make standard notifications If it is a human start, order an INVF. If fire is human caused with criminal potential, order a USFS LEO

4-GRBN D4 – Great Burn

AGENCY	UNIT	RESPONSE AREA #	RESPONSE AREA NAME	FDRA	RADIO GROUP	CENTER POINT
USFS	D4	4-GRBN	Great Burn	Lolo DNRC West	Central Zone	Straight Peak N47° 53.0' x W114° 53.6'

DISPATCH RESPONSE LEVEL	LOW	MODERATE	HIGH
FIRE RESPONSE <i>at minimum</i>	Notify Duty Officer	Notify Duty Officer	1 IA Module

DISPATCH COMMENTS

SHARED BOUNDARY:

- Determine if Mineral County 911 has dispatched county fire resources or notified adjacent counties
- Notify responding resources of county fire resources status
- Nex Perce-Clearwater National Forest

IF AIRCRAFT IS ORDERED:

- Ensure helicopter is (or can be) configured for long line, bucket work and/or crew shuttle
- Ninemile Airstrip is available for initial attack support
N47° 4.6 x W114° 24.9'
- Beaver Ponds Helispot is available for initial attack support
N46° 46.897' x W114° 35.457'

KNOWN HAZARDS:

- This area falls into a proposed wilderness category and emergency access can be limited.

NOTIFICATIONS:

- District Duty Officer
- If smoke report is within 2 nautical miles of the district boundary, notify appropriate District Duty Officer
- Ifs smoke report is within 2 nautical miles of Nez Perce-Clearwater National Forest, notify Grangeville Dispatch Center

DUTY OFFICER CONSIDERATIONS:

- Determine if additional resources are necessary
- Make standard notifications
- If it is a human start, order an INVF. If fire is human caused with criminal potential, order a USFS LEO

4-SFSH D4 – South Fish Creek

AGENCY	UNIT	RESPONSE AREA #	RESPONSE AREA NAME	FDRA	RADIO GROUP	CENTER POINT
USFS	D4	4-SFSH	South Fish Creek	Lolo DNRC West	Central Zone	Surveyor Creek N46° 50.6' x W114° 42.4'

DISPATCH RESPONSE LEVEL	LOW	MODERATE	HIGH
FIRE RESPONSE <i>at minimum</i>	Notify Duty Officer	1 IA Module	1 Engine 1 IA Module

DISPATCH COMMENTS

SHARED BOUNDARY:

- Determine if Missoula County 911 has dispatched county fire resources or notified adjacent counties
- Notify responding resources of county fire resources status.
- Missoula Ranger District (D3)

IF AIRCRAFT IS ORDERED:

- Ensure helicopter is (or can be) configured for long line, bucket work and/or crew shuttle.
- Ninemile Airstrip is available for initial attack support
N47° 4.6 x W114° 24.9'
- Beaver Ponds Helispot is available for initial attack support
N46° 46.897' x W114° 35.457'

KNOWN HAZARDS:

- Much of this country is in Inventoried Roadless Area and access is limited.

NOTIFICATIONS:

- District Duty Officer
- If smoke report is within 2 nautical miles of district boundary, notify the appropriate District Duty Officer

DUTY OFFICER CONSIDERATIONS:

- Determine if additional resources are necessary.
- Make standard notifications.
- If it is a human start, order an INVF. If fire is human caused with criminal potential, order a USFS LEO.

4-BRDT D4 – Burdette

AGENCY	UNIT	RESPONSE AREA #	RESPONSE AREA NAME	FDRA	RADIO GROUP	CENTER POINT
USFS	D4	4-BRDT	Burdette	Lolo DNRC West	Central Zone	Ridge Top E of Burdette Creek N47° 51.7' x W114° 35.3

DISPATCH RESPONSE LEVEL	LOW	MODERATE	HIGH
FIRE RESPONSE <i>at minimum</i>	Notify Duty Officer	Notify Duty Officer	1 IA Module

DISPATCH COMMENTS

<p>SHARED BOUNDARY:</p> <ul style="list-style-type: none"> Determine if Missoula County 911 has dispatched county fire resources or notified adjacent counties Notify responding resources of county resources status. Missoula Ranger District (D3)
<p>IF AIRCRAFT IS ORDERED:</p> <ul style="list-style-type: none"> Ensure helicopter is (or can be) configured for long line, bucket work and/or crew shuttle. Ninemile Airstrip is available for initial attack support N47° 4.6 x W114° 24.9' Beaver Ponds Helispot is available for initial attack support N46° 46.897' x W114° 35.457'
<p>KNOWN HAZARDS:</p> <ul style="list-style-type: none"> Much of this country is in Inventoried Roadless Area and access is limited.
<p>NOTIFICATIONS:</p> <ul style="list-style-type: none"> District Duty Officer If smoke report is within 1 nautical mile of district boundary, notify appropriate Duty Officer
<p>DUTY OFFICER CONSIDERATIONS:</p> <ul style="list-style-type: none"> Determine if additional resources are necessary. Make standard notifications. If it is a human start, order an INVF. If fire is human caused with criminal potential, order a USFS LEO.

4-WPTY D4 – West Petty Creek

AGENCY	UNIT	RESPONSE AREA #	RESPONSE AREA NAME	FDRA	RADIO GROUP	CENTER POINT
USFS	D4	4-WPTY	West Petty Creek	Lolo DNRC East	Central Zone	N47° 6.0' x W114° 25.5'

DISPATCH RESPONSE LEVEL	LOW	MODERATE	HIGH
FIRE RESPONSE at minimum	Notify Duty Officer	1 IA Module	1 Engine 1 IA Module

DISPATCH COMMENTS

SHARED BOUNDARY:

- Determine if Missoula County 911 has dispatched county fire resources or notified adjacent counties within 1 nautical mile of the smoke report
- Notify responding resources of county fire resources status.
- DNRC Missoula Unit (MSO)
- Missoula Ranger District (D3)

IF AIRCRAFT IS ORDERED:

- Ensure helicopter is (or can be) configured for long line, bucket work and/or crew shuttle.
- Ninemile Airstrip is available for initial attack support
N47° 4.6 x W114° 24.9'
- Sawmill Gulch Helispot is available for initial attack support
N47° 58.626' x W114° 31.716'

KNOWN HAZARDS:

- BPA Powerlines running northeast in the response area.
- Heavy traffic in the summertime along the main Petty Creek Road.

NOTIFICATIONS:

- District Duty Officer
- If smoke report is within 2 nautical miles of district boundary, notify the appropriate District Duty Officer

DUTY OFFICER CONSIDERATIONS:

- Determine if additional resources are necessary.
- Make standard notifications.
- If it is a human start, order an INVF. If fire is human caused with criminal potential, order a USFS LEO.

4-EPTY D4 – East Petty Creek

AGENCY	UNIT	RESPONSE AREA #	RESPONSE AREA NAME	FDRA	RADIO GROUP	CENTER POINT
USFS	D4	4-EPTY	East Petty Creek	Lolo DNRC East	Central Zone	N46° 52.8' x W114° 26.3'

DISPATCH RESPONSE LEVEL	LOW	MODERATE	HIGH
FIRE RESPONSE at minimum	Notify Duty Officer	1 Engine	1 Engine 1 IA Module

DISPATCH COMMENTS

SHARED BOUNDARY:

- Determine if Missoula County 911 has dispatched county fire resources or notified adjacent counties
- Notify responding resources of county fire resources status.
- DNRC Missoula Unit (MSO)
- Missoula Ranger District (D3)

IF AIRCRAFT IS ORDERED:

- Ensure helicopter is (or can be) configured for long line, bucket work and/or crew shuttle
- Ninemile Airstrip is available for initial attack support
N47° 4.6 x W114° 24.9'

KNOWN HAZARDS:

- High traffic concentrations in the summer along main Petty Creek Road

NOTIFICATIONS:

- District Duty Officer
- If smoke report is within 2 nautical miles of district boundary, notify the appropriate District Duty Officer

DUTY OFFICER CONSIDERATIONS:

- Determine if additional resources are necessary
- Make standard notifications
- If it is a human start, order an INV. If fire is human caused with criminal potential, order a USFS LEO

4-ALBR D4 – Albert Point

AGENCY	UNIT	RESPONSE AREA #	RESPONSE AREA NAME	FDRA	RADIO GROUP	CENTER POINT
USFS	D4	4-ALBR	Albert Point	Lolo DNRC East	Central Zone	Petty Mountain N47° 54.7' x W114° 24.3'

DISPATCH RESPONSE LEVEL	LOW	MODERATE	HIGH
FIRE RESPONSE <i>at minimum</i>	Notify Duty Officer	1 IA Module	1 IA Module

DISPATCH COMMENTS

SHARED BOUNDARY:

- Determine if Missoula County 911 has dispatched county fire resources or notified adjacent counties
- Notify responding resources of county fire resources status
- DNRC Missoula Unit (MSO)
- Missoula Ranger District (D3)

IF AIRCRAFT IS ORDERED:

- Ensure helicopter is (or can be) configured for long line, bucket work and/or crew shuttle
- Ninemile Airstrip is available for initial attack support
N47° 4.6 x W114° 24.9'

KNOWN HAZARDS:

- BPA Powerlines running north and east of Albert Point
- South Side Road traffic

NOTIFICATIONS:

- District Duty Officer
- If smoke report is within 2 nautical miles of district boundary, notify the appropriate District Duty Officer

DUTY OFFICER CONSIDERATIONS:

- Determine if additional resources are necessary
- Make standard notifications
- If it is a human start, order an INVF. If fire is human caused with criminal potential, order a USFS LEO

4-WSSR D4 – West Southside

AGENCY	UNIT	RESPONSE AREA #	RESPONSE AREA NAME	FDRA	RADIO GROUP	CENTER POINT
USFS	D4	4-WSSR	West Southside	Lolo DNRC East	Central Zone	N46° 59.7' x W114° 22.8'

DISPATCH RESPONSE LEVEL	LOW	MODERATE	HIGH
FIRE RESPONSE <i>at minimum</i>	Notify Duty Officer	1 Engine	1 Engine 1 IA Module

DISPATCH COMMENTS

SHARED BOUNDARY:

- Determine if Missoula County 911 has dispatched county fire resources or notified adjacent counties within 1 nautical mile of the smoke report
- Notify responding resources of county fire resources status.
- DNRC Missoula Unit (MSO)

IF AIRCRAFT IS ORDERED:

- Ensure helicopter is (or can be) configured for long line, bucket work and/or crew shuttle.
- Ninemile Airstrip is available for initial attack support
N47° 4.6 x W114° 24.9'
- Sawmill Gulch Helispot is available for initial attack support
N47° 58.626' x W114° 31.716'

KNOWN HAZARDS:

- BPA Powerlines running northeast in the response area
- Heavy traffic and camping along the South Side Road
- Train tracks run along the northern portion of the response area

NOTIFICATIONS:

- District Duty Officer
- If smoke report is within 2 nautical miles of district boundary, notify the appropriate District Duty Officer

DUTY OFFICER CONSIDERATIONS:

- Determine if additional resources are necessary
- Make standard notifications
- If it is a human start, order an INVF. If fire is human caused with criminal potential, order a USFS LEO

4-LG04FT D4 – Frenchtown County Response

AGENCY	UNIT	RESPONSE AREA #	RESPONSE AREA NAME	FDRA	RADIO GROUP	CENTER POINT
USFS	D4	4-LG04FT	Frenchtown County Response	Lolo DNRC East	Central Zone	N47° 1.3' x W114° 17.4'

DISPATCH RESPONSE LEVEL	LOW	MODERATE	HIGH
FIRE RESPONSE at minimum	Notify Duty Officer	1 Engine	1 Engine 1 IA Module

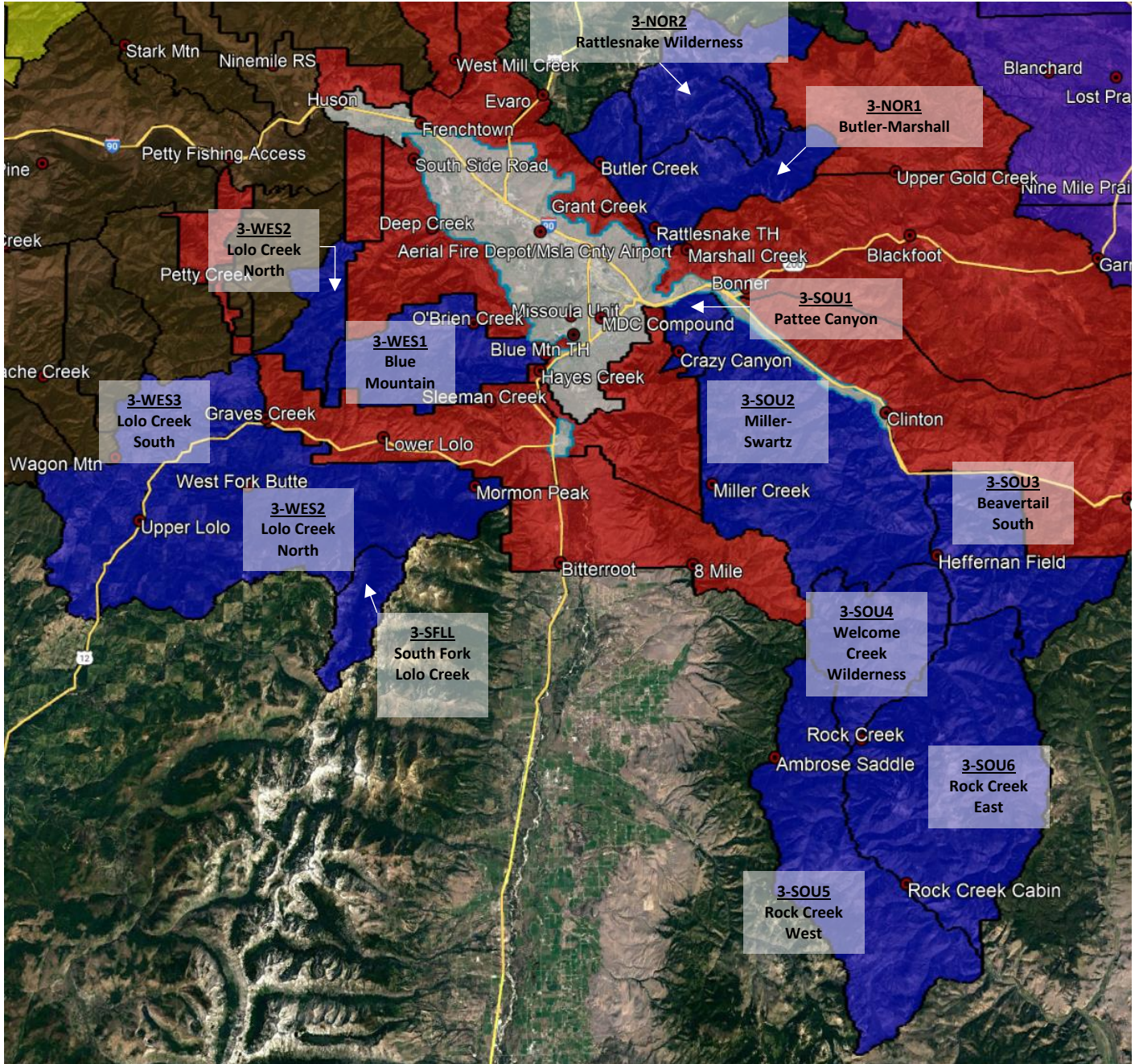
DISPATCH COMMENTS

<p>SHARED BOUNDARY:</p> <ul style="list-style-type: none"> Determine if Missoula County 911 has dispatched county fire resources or notified adjacent counties Notify responding resources of county fire resources status DNRC Missoula Unit (MSO) Missoula Ranger District (D3)
<p>IF AIRCRAFT IS ORDERED:</p> <ul style="list-style-type: none"> Ensure helicopter is (or can be) configured for long line and bucket work Ninemile Airstrip is available for initial attack support N47° 4.6 x W114° 24.9'
<p>KNOWN HAZARDS:</p> <ul style="list-style-type: none"> I-90 corridor traffic that runs along the south of the response area
<p>NOTIFICATIONS:</p> <ul style="list-style-type: none"> District Duty Officer If smoke report is within 2 nautical miles of district boundary, notify the appropriate District Duty Officer
<p>DUTY OFFICER CONSIDERATIONS:</p> <ul style="list-style-type: none"> Determine if additional resources are necessary Make standard notifications If it is a human start, order an INV. If fire is human caused with criminal potential, order a USFS LEO

THIS PAGE INTENTIONALLY LEFT BLANK

Central Zone – Missoula Ranger District (D3)

Lolo National Forest



3-WES1 D3 – Blue Mountain

AGENCY	UNIT	RESPONSE AREA #	RESPONSE AREA NAME	FDRA	RADIO GROUP	CENTER POINT
USFS	D3	3-WES1	Blue Mountain	Lolo DNRC East	Central Zone	McClay Flat Trailhead N46° 50.1' x W114° 6.2'

DISPATCH RESPONSE LEVEL	LOW	MODERATE	HIGH
FIRE RESPONSE at minimum	Notify Duty Officer	1 Engine	1 Engine 1 IA Module ICT4

DISPATCH COMMENTS

SHARED BOUNDARY:

- Ninemile Ranger District (D4)
- DNRC Missoula Unit (MSO)
- Missoula City Fire or Rural Fire Department may have protection responsibilities in this response area

IF AIRCRAFT IS ORDERED:

- DIPSITES
 - Bitterroot River.
 - Lolo Creek.
 - Huckleby (private): N46° 53.760' x W114° 17.397' confluence of Deep/Gilman Creeks
 - Grave Creek dipsite (private): N46° 48.178' x W114° 24.148'
- HELIBASE
 - Missoula airport.
 - OZ Ranch helibase (private): N46° 45.729' x W114° 16.613'
- MEDEVAC SITES
 - Blue Mtn. Rec Area Medevac (FS): N46° 49.606' x W113° 5.831' (in wagon wheel)
 - OZ Ranch helibase (private): N46° 45.729' x W114° 16.613'
 - Huckleby Medevac (private): N46° 53.760' x W114° 17.397'
 - Dry Gulch Medevac (FS): N46° 51.843' x W114° 15.731'
 - Woodman Saddle Medevac (FS): N46° 48.599' x W114° 12.781'
 - Blue Mountain Medevac (FS): N46° 48.913' x W114° 11.284'
 - Grave Creek Medevac (private): N46° 48.082' x W114° 24.083'

KNOWN HAZARDS:

- Local wildlife and domestic animals.
- BPA powerline.
- U.S. highway 12 traffic.
- Potential delays in getting adequate emergency care due to some remoteness in this response area.
- Hikers/recreators in fire area with no quick routes of egress.
- One-way vehicle ingress and egress in O'Brien Creek.
- Potential for transient population in the Blue Mountain area. Be vigilant about your safety if an interaction should occur. Report all camps to FS law enforcement and district rec staff.

NOTIFICATIONS:

- If smoke report is within 1 nautical mile of district boundary, notify the appropriate District Duty Officer
- Power company if fires are near powerline corridors.

DUTY OFFICER CONSIDERATIONS:

- ACCESS
 - Good road and trail access in Blue Mountain Recreation Area and west to Woodman Saddle. Beyond this network road access is fairly poor. Some access exists via UTV along Grave Creek Range trail, towards Telephone Butte. This access begins at Woodman Saddle (#17806).
 - Vast trail systems exist within Blue Mountain Recreation Area for personnel to access on foot.
 - There is decent road access into O'Brien Creek.
 - Outside of Blue Mountain area, access is limited. Helicopter recommended for inserting ground personnel.
- CAMPS
 - For smaller incidents, potential exists in places like Woodman Saddle or Maclay Flat.
 - For larger incidents, availability of the Missoula County Fairgrounds should be checked.
 - Private field (Geraldine Ball) in Florence off the Eastside Hwy and Klements Road was used as ICP for Lolo Peak Fire (2017).
 - Traveler's Rest (MT-FWP) just west of Lolo, MT is an option that has been used in the past.
 - Property off Kona Ranch Rd and Mullan Rd (Robert Samuel property) was used during the Black Mtn Fire (2003).
- LAND USE AGREEMENTS
 - Contact MDC if land use agreements are needed.
 - Need owner name, address, lat/long of property, phone number, and an email address for dispatch to send resource order
 - Past land use agreements in this area are:
 - OZ Ranch helibase: N46° 45.729' x W114° 16.613'
 - Huckeby dipsite: N46° 53.760' x W114° 17.397'
 - Grave Creek dipsite: N46° 48.178' x W114° 24.148'
 - Private field (Geraldine Ball) in Florence off the Eastside Hwy and Road was used as ICP for Lolo Peak Fire (2017).
 - Traveler's Rest (MT-FWP) just west of Lolo is an option that has been used in the past.
 - Property off of Kona Ranch Road and Mullan Road (Robert Samuel property) was used during the Black Mtn fire in 2003.
 - *Missoula Ranger District Fire Management Google COP has contact information
- MAJOR VALUES
 - Blue Mountain Lookout.
 - Residents in O'Brien Creek, Blue Mtn road, and Big Flat Road area.
 - Residents in Hayes Creek, Sleeman Creek, lower Hwy 12 corridor, Grave Creek.
 - BPA powerlines.
 - Blue Mountain Recreation Area (BMRA) – Lewis & Clark National Historic Trail Center.
 - Timber value in Blue Mountain area.
- OTHER CONSIDERATIONS
 - Determine if additional resources are necessary
 - Make standard notifications
 - If it is a human start, order an INV. If fire is human caused with criminal potential, order a USFS LEO.
 - If fires are within road corridors, consider law enforcement presence for traffic control.
 - Fires in the Blue Mountain, O'Brien, and Sleeman Creek areas typically call for a mutual aid response. Use "Red" as the tactical frequency for the fire.
 - Fires in BMRA are historically started by humans. Protect fire origins when possible.
 - Thinning and prescribed burning operations completed in the BMRA over the last decade. Should make wildfires easier to bring under control
 - When responding to fires in the BMRA, prepare to come upon all manners of recreational activities, from walking, jogging, horseback riding, disc golf, UTV's and motorcycles.

3-WES2 D3 – Lolo Creek North

AGENCY	UNIT	RESPONSE AREA #	RESPONSE AREA NAME	FDRA	RADIO GROUP	CENTER POINT
USFS	D3	3-WES2	Lolo Creek North	Lolo DNRC East	Central Zone	Elk Meadows Road N46° 44.8' x W114° 18.9'

DISPATCH RESPONSE LEVEL	LOW	MODERATE	HIGH
FIRE RESPONSE at minimum	Notify Duty Officer	Notify Duty Officer	1 Engine

DISPATCH COMMENTS

SHARED BOUNDARY:

- Bitterroot National Forest – Bitterroot (Hamilton) Dispatch Center
- Nez Perce-Clearwater National Forest – Grangeville Dispatch Center
- DNRC Missoula Unit (MSO)
- Missoula Rural Fire Department may fire protection responsibilities in this response area.

IF AIRCRAFT IS ORDERED:

- DIPSITES
 - Granite Lake (Nez/Clearwater NF/FS): N46° 39.359' x W114° 24.867'
 - Lolo Creek.
 - Grave Creek dipsite (private): N46° 48.178' x W114° 24.148'
- HELIBASE
 - Lolo Hot Spring helibase (private): N46° 43.407' x W114° 31.970'
 - OZ Ranch helibase (private): N46° 45.729' x W114° 16.613'
- MEDEVAC SITES
 - Lolo Hot Springs Medevac (private): N46° 43.407' x W114° 31.970'
 - OZ Ranch helibase (private): N46° 45.729' x W114° 16.613'
 - Sally Basin Medevac (FS): N46° 42.139' x W114° 30.589'
 - Sally Ridge Medevac (FS): N46° 43.650' x W114° 28.775'
 - Upper Sally Ridge Medevac (FS): N46° 42.300' x W114° 25.541'
 - Upper Cooper Medevac (FS): N46° 41.915' x W114° 23.779'
 - Mary's Frog Pond Medevac (FS): N46° 41.968' x W114° 20.921'
 - South Fork Lolo Medevac (FS): N46° 43.401' x W114° 18.827'
 - Mormon Ridge Medevac (FS): N46° 43.111' x W114° 11.412'
 - Mormon Peak Medevac (FS): N46° 43.528' x W114° 10.119'
 - Ski Hut Medevac (FS): N46° 37.999' x W114° 27.921'
 - Packer Meadow Medevac (Nez/Clearwater NF): N46° 38.260' x W114° 33.180'

KNOWN HAZARDS:

- Local wildlife and domestic animals.
- Remote response area in many places.
- U.S. highway 12 traffic.
- Motorized use trail on Lee Ridge (#295) and Mill Creek (#1310).
- Numerous snags/weakened trees from Lolo Peak Fire Scar (2017)

NOTIFICATIONS:

- If smoke report is within 1 nautical mile from a neighboring dispatch center, notify the appropriate center.
- If smoke report is within 1 nautical mile from of DNRC Missoula Unit (MSO), notify appropriate District Duty Officer
- Contact MT Department of Transportation for fires which would impact Highway 12 corridor

DUTY OFFICER CONSIDERATIONS:

- ACCESS
 - Good road access on Hwy 12 from Lolo to Lolo Pass, approx. 30 minutes travel time.
 - Good road access up Marshall Creek (Elk Meadows), Cooper Creek, West Fork Butte Creek, Mormon Peak.
 - Good road access up Lolo Creek, Lee Creek, and Lost Park Creek.
 - Trail access into South Fork Lolo Creek and Wagon Mountain.
- CAMPS
 - For smaller incidents, potential exists in places like Lee Creek, Earl Tennant, and Lolo Creek campgrounds.
 - A private field (Geraldine Ball) in Florence off the Eastside Hwy and Klements Road was used as ICP for Lolo Peak Fire (2017).
 - Traveler's Rest (MT-FWP) just west of Lolo is an option that has been used in the past.
 - For larger incidents, availability of the Missoula County Fairgrounds should be checked.
- LAND USE AGREEMENTS
 - Contact MDC if land use agreements are needed.
 - Need owner name, address, lat/long of property, phone number, and an email address for dispatch to send resource order
 - Past land use agreements in this area are:
 - OZ Ranch helibase: N46° 45.729' x W114° 16.613'
 - Lolo Hot Springs helibase: N46° 43.407' x W114° 31.970'
 - Grave Creek dipsite (Rosignoll property): N46° 48.178' x W114° 24.148'
 - Private field (Geraldine Ball) in Florence off the Eastside Hwy and Klements Road was used as ICP for Lolo Peak Fire (2017).
 - Traveler's Rest (MT-FWP) just west of Lolo is an option that has been used in the past.
 - *Missoula Ranger District Fire Management Google COP has contact information
- MAJOR VALUES
 - West Fork Butte and Skookum Butte Lookouts.
 - Lolo Pass Visitor Center.
 - Lolo Hot Springs.
 - Lolo Creek watershed.
 - Fort Fizzle.
 - Residents in Hwy 12 corridor of Lolo Creek.
 - Lee Creek, Lolo Creek, and Earl Tennant campgrounds.
 - Lost Park ski hut.
 - Timber value.
- OTHER CONSIDERATIONS
 - Communication back to MDC may be best done through the White Mountain repeater
 - Determine if additional resources are necessary
 - Make standard notifications
 - If it is a human start, order an INVF. If fire is human caused with criminal potential, order a USFS LEO.
 - If fires are near Highway 12 road corridors, consider law enforcement for traffic control
 - Consider a portable repeater in the upper reaches of this response area. Repeaters have been set up around the West Fork Butte lookout area.
 - Lee Creek Campground host should have a phone with reception back to Fort Missoula.
 - The Nez Perce and Lewis & Clark National Historic Trail cuts through portions of upper Lee Creek and Wagon Mountain.
 - Missoula Rural Fire Department has responded to calls near Lolo Hot Springs although it is well outside their response area.

3-WES3 D3 – Lolo Creek South

AGENCY	UNIT	RESPONSE AREA #	RESPONSE AREA NAME	FDRA	RADIO GROUP	CENTER POINT
USFS	D3	3-WES3	Lolo Creek South	Lolo DNRC East	Central Zone	Howard Creek N46° 46.6' x W114° 26.3'

DISPATCH RESPONSE LEVEL	LOW	MODERATE	HIGH
FIRE RESPONSE at minimum	Notify Duty Officer	Notify Duty Officer	1 Engine

DISPATCH COMMENTS

SHARED BOUNDARY:

- Nez Perce-Clearwater National Forest – Grangeville Dispatch Center
- Ninemile Ranger District (D4)
- DNRC Missoula Unit (MSO)

IF AIRCRAFT IS ORDERED:

- DIPSITES
 - Howard Creek Meadows dipsite (FS): N46° 46.490' x W114° 32.242'
 - Lolo Creek.
 - Grave Creek dipsite (private): N46° 48.178' x W114° 24.148'
 - Granite Lake (Nez/Clearwater NF/FS): N46° 39.359' x W114° 24.867'
- HELIBASE
 - Lolo Hot Spring helibase (private): N46° 43.407' x W114° 31.970'
 - OZ Ranch helibase (private): N46° 45.729' x W114° 16.613'
 - Howard Creek Meadows (FS): N46° 46.646' x W114° 31.304'
- MEDEVAC SITES
 - Lolo Hot Springs Medevac (private): N46° 43.407' x W114° 31.970'
 - OZ Ranch helibase (private): N46° 45.729' x W114° 16.613'
 - Howard Creek Meadows (FS): N46° 46.646' x W114° 31.304'
 - North Fork Granite Medevac (FS): N46° 44.227' x W114° 35.431'
 - Granite Creek Medevac (FS): N46° 41.157' x W114° 36.595'
 - Packer Meadow Medevac (Nez/Clearwater NF): N46° 38.260' x W114° 33.180'

KNOWN HAZARDS:

- Local wildlife and domestic animals.
- Remote response area in many places.
- U.S. highway 12 traffic.
- Motorized use trail on Granite Ridge trail (#289), Tepee Creek Ridge (#26), and North Fork Howard Creek trail (#322).
- Numerous snags/weakened trees from Hopeful 2 and North Howard fires (2003)

NOTIFICATIONS:

- If smoke report is within 1 nautical mile from a neighboring dispatch center, notify the appropriate center.
- If smoke report is within 1 nautical mile from of district boundary, notify appropriate District Duty Officer
- Contact Department of Transportation for fires which would impact Highway 12 corridor

DUTY OFFICER CONSIDERATIONS:

- ACCESS
 - Good road access on Hwy 12 from Lolo to Lolo Pass, approx. 30 minutes travel time.
 - Good road access up Howard Creek to Wagon Mtn Road and over to Fish Creek or Grave Creek
 - Good road access up Granite Creek to Granite Pass.
 - Good road access to much of this response area due to past timber harvesting.
 - Trail access exists on Granite Ridge trail (#289) and access to Pilot Knob area is best via trail #1314. North Creek area is accessed via trail #5.
- CAMPS
 - For smaller incidents, potential exists in places like Lee Creek, Earl Tennant, and Lolo Creek campgrounds. Howard Creek Meadows is also a possibility.
 - Traveler's Rest (MT-FWP) just west of Lolo, MT is an option that has been used in the past.
 - For larger incidents in the upper end of Lolo Creek, availability in and around the Powell Ranger Station (Nez Perce/Clearwater NF) should be considered.
- LAND USE AGREEMENTS
 - Contact MDC if land use agreements are needed.
 - Need owner name, address, lat/long of property, phone number, and an email address for dispatch to send resource order
 - Past land use agreements in this area are:
 - OZ Ranch helibase (private): N46° 45.729' x W114° 16.613'
 - Lolo Hot Springs helibase (private): N46° 43.407' x W114° 31.970'
 - Grave Creek dipsite: N46° 48.178' x W114° 24.148'
 - Traveler's Rest (MT-FWP) just west of Lolo is an option that has been used in the past.
 - *Missoula Ranger District Fire Management Google COP has contact information
- MAJOR VALUES
 - Lolo Hot Springs.
 - Lolo Pass Visitor Center.
 - Lolo Creek watershed.
 - Grave Creek residents and Lumberjack Saloon.
 - Residents in Hwy 12 corridor of Lolo Creek.
 - Lee Creek, Lolo Creek, and Earl Tennant campgrounds
 - Timber value.
- OTHER CONSIDERATIONS
 - Communication back to MDC may be best done through the White Mountain repeater
 - Determine if additional resources are necessary
 - Make standard notifications
 - If it is a human start, order an INVF. If fire is human caused with criminal potential, order a USFS LEO.
 - If fires are near highway 12 road corridors, consider law enforcement presence for traffic control
 - Lee Creek Campground host should have a phone with reception back to Fort Missoula.
 - The Nez Perce (Nee Mee Poo) and Lewis & Clark National Historic trails run along foothills of Hwy 12 corridor from Grave Creek to just past Mud Creek, before crossing Hwy 12 around mile marker 5.5.
 - Missoula Rural Fire Department has responded to calls near Lolo Hot Springs although it appears this is well outside their response area.

3-WES4 D3 – Graves Creek

AGENCY	UNIT	RESPONSE AREA #	RESPONSE AREA NAME	FDRA	RADIO GROUP	CENTER POINT
USFS	D3	3-WES4	Graves Creek	Lolo DNRC East	Central Zone	Telephone Butte N46° 51.1' x W114° 20.7'

DISPATCH RESPONSE LEVEL	LOW	MODERATE	HIGH
FIRE RESPONSE at minimum	Notify Duty Officer	Notify Duty Officer	Notify Duty Officer

DISPATCH COMMENTS

SHARED BOUNDARY:

- Ninemile Ranger District (D4)
- DNC Missoula Unit (MSO)

IF AIRCRAFT IS ORDERED:

- DIPSITES
 - Bitterroot River.
 - Lolo Creek.
 - Huckleby dipsite (private): N46° 53.760' x W114° 17.397'
 - Confluence of Deep/Gilman Creeks.
 - Grave Creek dipsite (private): N46° 48.178' x W114° 24.148'
- HELIBASE
 - Missoula airport.
 - OZ Ranch helibase (private): N46° 45.729' x W114° 16.613'
- MEDEVAC SITES
 - OZ Ranch helibase (private): N46° 45.729' x W114° 16.613'
 - Huckleby Medevac (private): N46° 53.760' x W114° 17.397'.
 - Dry Gulch Medevac (FS): N46° 51.843' x W114° 15.731'
 - Woodman Saddle Medevac (FS): N46° 48.599' x W114° 12.781'
 - Grave Creek Medevac (private): N46° 48.082' x W114° 24.083'

KNOWN HAZARDS:

- Local wildlife and domestic animals.
- BPA powerline.
- Potential delays in getting adequate emergency care because of some remoteness in this response area.
- Hikers/recreators/motorbikes in fire area with no quick routes of egress.
- One-way vehicle ingress and egress in O'Brien Creek.

NOTIFICATIONS:.

- If smoke report is within 1 nautical mile from of Ninemile Ranger District or DNRC Missoula Unit (MSO), notify appropriate District Duty Officer
- Power company if fires are near powerline corridors.

DUTY OFFICER CONSIDERATIONS:

- ACCESS
 - Grave Creek Jeep trail (FS road #17806) from Woodman Saddle. Not suitable for engines or large trucks. Recommend some type of ATV/UTV.
 - There is decent road access into O'Brien Creek. Access from where road dead ends is poor, and most likely on foot.
 - Helicopter would be the recommended option for inserting ground personnel.
 - Some access may exist via Grave Creek and Bear Creek. Would be minimal. Needs to be explored.
- CAMPS
 - For smaller incidents, potential exists in places like Woodman Saddle.
 - For larger incidents, availability of the Missoula County Fairgrounds should be checked.
 - A private field (Geraldine Ball) in Florence off the Eastside Hwy and Klements Rd. was used as ICP in 2017 for the Lolo Peak fire.
 - Traveler's Rest (MT-FWP) just west of Lolo, MT is an option that has been used in the past.
 - Property off of Kona Ranch Rd and Mullan Rd (Robert Samuel property) was used during the Black Mtn fire in 2003.
 - OZ Ranch could be an option.
- LAND USE AGREEMENTS
 - Contact MDC if land use agreements are needed.
 - Need owner name, address, lat/long of property, phone number, and an email address for dispatch to send resource order
 - Past land use agreements in this area are:
 - OZ Ranch helibase: N46° 45.729' x W114° 16.613'
 - Huckeyby dipsite: N46° 53.760' x W114° 17.397'
 - Grave Creek dipsite: N46° 48.178' x W114° 24.148'
 - Private field (Geraldine Ball) in Florence off the Eastside Hwy and Klements Rd. was use as ICP in 2017 for the Lolo Peak fire.
 - Traveler's Rest (MT-FWP) just west of Lolo, MT is an option that has been used in the past.
 - Property off of Kona Ranch Road and Mullan Road (Robert Samuel property) was used during the Black Mtn fire in 2003.
 - *Missoula Ranger District Fire Management Google COP has contact information
- MAJOR VALUES
 - FS trail system
 - Wildlife habitat
- OTHER CONSIDERATIONS
 - Determine if additional resources are necessary
 - Make standard notifications
 - If it is a human start, order an INVF. If fire is human caused with criminal potential, order a USFS LEO.
 - Be aware of recreators on Grave Creek Jeep trail, especially motorbikes and ATV/UTV's.
 - Lack of good safety zones in heavy timber with poor access.
 - While there is a lack of recent fire history, there have been places of active timber management.

3-SFLL D3 – South Fork Lolo Creek

AGENCY	UNIT	RESPONSE AREA #	RESPONSE AREA NAME	FDRA	RADIO GROUP	CENTER POINT
USFS	D3	3-SFLL	South Fork Lolo Creek	Lolo DNRC East	Central Zone	South Fork Lolo Creek Drainage N46° 38.3' x 114° 17.9'

DISPATCH RESPONSE LEVEL	LOW	MODERATE	HIGH
FIRE RESPONSE at minimum	Notify Duty Officer	Notify Duty Officer	Notify Duty Officer

DISPATCH COMMENTS

SHARED BOUNDARY:

- Bitterroot National Forest – Bitterroot (Hamilton) Dispatch Center
- Nez Perce-Clearwater National Forest – Grangeville Dispatch Center

IF AIRCRAFT IS ORDERED:

- DIPSITES
 - Carlton Lake (Selway-Bitterroot Wilderness). Document any wilderness intrusions.
 - Bass Lake (Selway-Bitterroot Wilderness).
 - South Fork Lolo Creek.
 - Lily Lake (Bitterroot National Forest - Powell RD).
- HELIBASE
 - Missoula airport.
 - OZ Ranch helibase (private): N46° 45.729' x W114° 16.613'
- MEDEVAC SITES
 - None have been located within a reasonable amount of time.
- South Fork Lolo Creek is in a retardant avoidance area

KNOWN HAZARDS:

- Local wildlife and domestic animals.
- In the event of an unwanted outcome, potential delays in getting adequate emergency care because of the remoteness in this response area.
- Hikers/recreators in fire area with no quick routes of egress.
- Manifold snag hazard most likely present as majority of area was burned during Lolo Peak fire in 2017.
- Steep, rocky slopes with poor access.

NOTIFICATIONS:

- If smoke report is within 1 nautical mile from a neighboring dispatch center, notify the appropriate center.

DUTY OFFICER CONSIDERATIONS:

- ACCESS
 - South Fork Lolo trail (FS trail #311) from Elk Meadows – by foot..
 - Helicopter the recommended way of the best accessing this response area for inserting ground personnel. No known helispots are documented, but some may exist on or near South Fork Lolo Trail. Contact district ranger for any wilderness intrusions.
- CAMPS
 - Perhaps something available on the Powell Ranger District (e.g., Packer Meadows)
 - A virtual ICP could be set up in Missoula somewhere as large, traditional ICP would not be feasible for the remoteness of this response area.
 - Traveler's Rest (MT-FWP) just west of Lolo, MT is an option that has been used in the past.
- LAND USE AGREEMENTS
 - Contact MDC if land use agreements are needed.
 - Need owner name, address, lat/long of property, phone number, and an email address for dispatch to send resource order
 - Past land use agreements in this area are:
 - OZ Ranch helibase: N46° 45.729' x W114° 16.613'
 - Private field (Geraldine Ball) in Florence off the Eastside Hwy and Klements Rd. was used as ICP in 2017 for the Lolo Peak fire.
 - Traveler's Rest (MT-FWP) just west of Lolo, MT is an option that has been used in the past
 - *Missoula Ranger District Fire Management Google COP has contact information
- MAJOR VALUES
 - Selway-Bitterroot Wilderness
 - FS trail system
 - Wildlife habitat
- OTHER CONSIDERATIONS
 - Determine if additional resources are necessary
 - Make standard notifications
 - Notify Missoula Recreation Program staff
 - Notify Bitterroot Recreation Program staff as the administer South Fork Lolo Trail System
 - If it is a human start, order an INVF. If fire is human caused with criminal potential, order a USFS LEO.
 - South Fork Lolo Creek is a retardant avoidance area.
 - Lack of good safety zones in heavy timber with poor access.
 - Adherence to wilderness protocols with fire suppression activities.

3-NOR1 D3 – Butler-Marshall

AGENCY	UNIT	RESPONSE AREA #	RESPONSE AREA NAME	FDRA	RADIO GROUP	CENTER POINT
USFS	D3	3-NOR1	Butler-Marshall	Lolo DNRC East	Central Zone	Rattlesnake Trailhead N46° 55.6' x W113° 57.5'

DISPATCH RESPONSE LEVEL	LOW	MODERATE	HIGH
FIRE RESPONSE at minimum	Notify Duty Officer	1 Engine	1 Engine 1 IA Module ICT4

DISPATCH COMMENTS

SHARED BOUNDARY:

- DNC Missoula Unit (MSO)
- Missoula County (LG04)
- Confederated Salish & Kootenai Tribes (Flathead Agency)

IF AIRCRAFT IS ORDERED:

- DIPSITES
 - Rattlesnake Creek
 - Grant Creek dipsite (private): N46° 56.556' x W114° 1.190'
- HELIBASE
 - Sawmill Meadows helibase (FS): N46° 56.272' x W113° 59.010', just beyond main Rattlesnake trailhead.
 - Grant Creek helibase (private): N46° 57.061' x W114° 0.682'
 - Butler Creek helibase (private): N46° 56.624' x W114° 5.658'
 - Potential options in Gold Creek
- MEDEVAC SITES
 - Sawmill Gulch Medevac (FS): N46° 56.272' x W113° 59.010' (in Sawmill Meadows)
 - Tin Shed Medevac (FS): N46° 59.980' x W114° 1.570' (tin sheds west of Snowbowl)
 - Beeskove Medevac (FS): N46° 58.034' x W113° 52.105' (Rattlesnake Creek)
 - Beeskove H2 Medevac (FS): N46° 58.125' x W113° 51.378' (Rattlesnake Creek)
 - Poe Meadow Medevac (FS): N46° 57.142' x W113° 55.513' (Rattlesnake Creek)
 - Schoolhouse Meadow Medevac (FS): N46° 55.997' x W113° 57.574' (Rattlesnake Creek)
 - Marshall 82 Medevac (FS): N46° 55.797' x W113° 55.143'
 - Marshall 200 Medevac (FS): N46° 56.027' x W113° 53.360'
 - Blue Point H75 Medevac (FS): N46° 56.265' x W113° 52.020'
 - Beeskove H76 Medevac (FS): N46° 56.445' x W113° 53.717'
 - Beeskove H77 Medevac (FS): N46° 56.588' x W113° 54.084'
 - Beeskove H78 Medevac (FS): N46° 56.748' x W113° 54.533'

KNOWN HAZARDS:

- Local wildlife and domestic animals.
- In the event of an unwanted outcome, potential delays in getting adequate emergency care.
- Hikers/recreators in fire area with no quick routes of egress.
- Powerline corridor through south and west portions of response area.
- One-way vehicle ingress and egress in upper Grant Creek.

NOTIFICATIONS:

- If smoke report is within 1 nautical mile from a district/unit boundary, notify the appropriate Duty Officer
- If smoke report is within 1 nautical mile of CSKT, notify Ronan Dispatch
- Power company if fires are near powerline corridors.

DUTY OFFICER CONSIDERATIONS:

- ACCESS
 - Good corridor road access to high values up La Valle Creek, Butler Creek, Grant Creek, and Rattlesnake Creek. Beyond the high values, which are mainly in the corridors most access will be by foot or helicopter.
 - Access to high value electronic sites is decent by vehicles travel.
 - Trail access is poor in most locations outside of Rattlesnake Creek. A vast trail system exists here for access.
 - Trail access in Grant Creek is mainly thru the Ravine trail (#34).
 - If accessing via Bonner mill yard to Woody Mountain area, call #406-926-1244
 - Lincoln Hills (Rattlesnake Creek) gate code is 1980.
- CAMPS
 - For smaller incidents, potential exists to use pre-existing meadows along Rattlesnake Creek.
 - For larger incidents, Butler Creek (Hanson property) might be best option. This was used in 2019 for the Beeskove fire (in Rattlesnake Creek). N46° 56.624' x W114° 5.658'
 - Grant Creek Ranch LLC has also been used for Type 3 incidents. N46° 57.061' x W114° 0.682'
- LAND USE AGREEMENTS
 - Contact MDC if land use agreements are needed.
 - Need owner name, address, lat/long of property, phone number, and an email address for dispatch to send resource order
 - Past land use agreements in this area are:
 - Hanson property in Butler Creek was used as ICP and helibase in 2019 during the Beeskove fire. N46° 56.624' x W114° 5.658'
 - Grant Creek Ranch LLC in Grant Creek has been used as an ICP/helibase/dipsite for state fires in the past. N46° 57.061' x W114° 0.682'
 - *Missoula Ranger District Fire Management Google COP has contact information
- MAJOR VALUES
 - Point 6 and TV Mountain electronic sites.
 - Residents and private property in Butler Creek, Grant Creek, and upper Rattlesnake Creek.
 - Rattlesnake Creek watershed.
 - Snowbowl ski resort.
 - Mineral Peak Lookout.
 - Resources and recreation opportunities associated with Rattlesnake National Recreation Area (RNRA) with wilderness portion too.
 - Timber value in La Valle Creek, Butler Creek, Grant Creek, and Rattlesnake Creek.
- OTHER CONSIDERATIONS
 - Communication options to MDC through Mineral Peak repeater if Central Direct is not consistent.
 - Determine if additional resources are necessary
 - Make standard notifications
 - If it is a human start, order an INVF. If fire is human caused with criminal potential, order a USFS LEO.
 - If fires are within road corridors, consider law enforcement presence for traffic control.
 - Fires in this area typically call for a mutual aid response, use Red as the tactical frequency for the fire.
 - The district has completed thinning and prescribed burning operations around the upper Rattlesnake community over the last decade which should make wildfires a little easier to control

3-NOR2 D3 – Rattlesnake Wilderness

AGENCY	UNIT	RESPONSE AREA #	RESPONSE AREA NAME	FDRA	RADIO GROUP	CENTER POINT
USFS	D3	3-NOR2	Rattlesnake Wilderness	Lolo DNRC East	Central Zone	Stuart Peak N47° 0.4' x W113° 55.2'

DISPATCH RESPONSE LEVEL	LOW	MODERATE	HIGH
FIRE RESPONSE at minimum	Notify Duty Officer	Notify Duty Officer	Notify Duty Officer

DISPATCH COMMENTS

SHARED BOUNDARY:

- DNRC Missoula Unit (MSO)
- Confederated Salish & Kootenai Tribes (CSKT – Flathead Agency)

IF AIRCRAFT IS ORDERED:

- DIPSITES
 - Numerous mountain lakes in Rattlesnake Wilderness.
- HELIBASE
 - Sawmill Meadows helibase (FS): N46° 56.272' x W113° 59.010', just beyond main Rattlesnake trailhead.
 - Butler Creek helibase (private): N46° 56.624' x W114° 5.658'
 - Potential options in Gold Creek can be explored
- MEDEVAC SITES
 - Sawmill Gulch Medevac (FS): N46° 56.272' x W113° 59.010' (in Sawmill meadows)
 - Beeskove Medevac (FS): N46° 58.034' x W113° 52.105' (Rattlesnake Creek)
 - Poe Meadow Medevac (FS): N46° 57.142' x W113° 55.513' (Rattlesnake Creek)
 - Schoolhouse Meadow Medevac (FS): N46° 55.997' x W113° 57.574' (Rattlesnake Creek)

KNOWN HAZARDS:

- Local wildlife
- Potential delays in getting adequate emergency care.
- Hikers/recreators in fire area with no quick routes of egress.

NOTIFICATIONS:

- If smoke report is within 1 nautical mile from a district/unit boundary, notify the appropriate Duty Officer
- If smoke report is within 1 nautical mile of CSKT, notify Ronan Dispatch

DUTY OFFICER CONSIDERATIONS:

- **ACCESS**
 - Road access up Rattlesnake Creek will take you to wilderness boundary. Not recommended travel for an engine. Truck or UTV only beyond Poe Meadow.
 - Area is relatively inaccessible by vehicles. Helicopter recommended form of personnel insertion.
 - Trail access is vast, but time-consuming. Not recommended in the event of an immediate suppression response to this area.
- **CAMPS**
 - For smaller incidents, potential exists to use pre-existing meadows along Rattlesnake Creek.
 - For larger incidents, Butler Creek (Hanson property) might be best option. This was used in 2019 for the Beeskove fire (in Rattlesnake Creek). N46° 56.624' x W114° 5.658'
- **LAND USE AGREEMENTS**
 - Contact MDC if land use agreements are needed.
 - Need owner name, address, lat/long of property, phone number, and an email address for dispatch to send resource order
 - Past land use agreements in this area are:
 - Hanson property in Butler Creek was used as ICP and helibase in 2019 during the Beeskove Fire. N46° 56.624' x W114° 5.658'
 - *Missoula Ranger District Fire Management Google COP has contact information
- **MAJOR VALUES**
 - Resources and recreation opportunities associated with Rattlesnake National Recreation Area Wilderness (RNRAW).
 - Point 6 electronic site.
 - Mineral Peak Lookout.
- **OTHER CONSIDERATIONS**
 - Communication options to MDC through Mineral Peak repeater
 - Determine if additional resources are necessary
 - Make standard notifications
 - If it is a human start, order an INV. If fire is human caused with criminal potential, order a USFS LEO.
 - Consider long-term management strategy based on various factors.

3-SOU1 D3 – Pattee Canyon

AGENCY	UNIT	RESPONSE AREA #	RESPONSE AREA NAME	FDRA	RADIO GROUP	CENTER POINT
USFS	D3	3-SOU1	Pattee Canyon	Lolo DNRC East	Central Zone	Crazy Canyon Trailhead N46° 49.5' x W113° 56.3'

DISPATCH RESPONSE LEVEL	LOW	MODERATE	HIGH
FIRE RESPONSE at minimum	Notify Duty Officer	1 Engine	1 Engine 1 IA Module ICT4

DISPATCH COMMENTS

SHARED BOUNDARY:

- DNRC Missoula Unit (MSO)
- Missoula County (LG04)

IF AIRCRAFT IS ORDERED:

- DIPSITES
 - Numerous open pools in Clark Fork River for dip sites.
 - Bear Run dipsite (private): N46° 47.174' x W113° 55.872' (in Bear Run Creek, SW side of response area, last used in 2017)
- HELIBASE
 - Most likely spot is Missoula Airport.
 - Possibility of using the Spooner Medevac field (private) in upper Miller Creek. N46° 43.805' x W113° 55.023'
- MEDEVAC SITES
 - Deer/Bear Medevac (FS): N46° 47.932' x W113° 55.444'
 - Spooner Medevac (private): N46° 43.805' x W113° 55.023' (upper Miller Creek)
 - Crazy Canyon Medevac (FS): N46° 50.259' x W113° 56.859'
 - University Ridge Medevac (FS): N46° 50.751' x W113° 55.712'

KNOWN HAZARDS:

- BPA powerlines in lower Deer Creek.
- Residents and private property in Pattee Canyon and Deer Creek.
- Electronic sites on University Mountain and Miller Peak.
- Transient settlement camps throughout response area, especially north side of University Mtn, above Kim Williams trail.
- Underground gas line that runs east and west, approx. 400 yards north of Pattee Canyon Picnic Area.
- Very popular multi-use recreation areas in Crazy Canyon and Pattee Canyon.
- Pattee Canyon road is a narrow, winding road, with multiple joggers/bikers going up and down all seasons.
- Slow/poor egress coming off secondary roads from Pattee Canyon and Deer Creek.
- Hikers/recreators in fire area with no quick routes of egress.

NOTIFICATIONS:

- If smoke report is within 1 nautical mile from a district/unit boundary, notify the appropriate Duty Officer

DUTY OFFICER CONSIDERATIONS:

- ACCESS
 - Road access is either Pattee Canyon or Deer Creek, depending on which side of Missoula you are in. If you are in East Missoula, best access is via Speedway Road and then take a left on Deer Creek Road, driving past the golf course. This road will take you south, eventually past the Deer Creek Shooting Range, onto a gravel road and up the Deer Creek drainage.
 - Overall engine access is good in this area.
 - Trail access in recreation areas is vast, and easily navigable by foot because of terrain.
- CAMPS
 - For smaller incidents, potential exists to use Pattee Canyon Picnic Area, however cell phone coverage here can be inconsistent.
 - For larger incidents, recommend Missoula County fairgrounds, or options not yet explored.
 - Sometimes incident personnel in this area will not have a formal camp, but will meet up at the district in the mornings for briefing
- LAND USE AGREEMENTS
 - Contact MDC if land use agreements are needed.
 - Need owner name, address, lat/long of property, phone number, and an email address for dispatch to send resource order
 - Past land use agreements in this area are:
 - None
 - *Missoula Ranger District Fire Management Google COP has contact information
- MAJOR VALUES
 - Deer Creek and Pattee Canyon residents and private property.
 - Residents and private property along I-90 corridor.
 - BPA powerline and corridor.
 - Smoke and fire impacts to I-90 corridor.
 - Electronic sites on Miller Peak and University Mtn.
 - Pattee Canyon and Crazy Canyon recreation areas.
 - Pattee Canyon Picnic area
- OTHER CONSIDERATIONS
 - Determine if additional resources are necessary
 - Make standard notifications
 - If it is a human start, order an INV. If fire is human caused with criminal potential, order a USFS LEO.
 - If fire is located within Pattee Canyon and Crazy Canyon recreation areas, contact Missoula Ranger District rec staff, especially if trail closures need to go in effect.
 - Fires in this area typically call for a mutual aid response, use Red as the tactical frequency for the fire.
 - Engine draft sites exist in Deer Creek.
 - Fires historically within and around recreation areas have been human starts. Protect the scene.
 - Because of vast trail network within recreation areas, potential exists during moderate to high planning levels to initiate suppression actions with ignition devices, rather than hand tools, and use existing trails as control features.
 - Portions of the recreation area have been heavily thinned and burned over the last two decades and are very responsive to suppression actions
 - If fires are within road corridors, consider law enforcement presence for traffic control.
 - **Law enforcement presence recommended for all fires on north side of University Mountain**

3-SOU2 D3 – Miller-Swartz

AGENCY	UNIT	RESPONSE AREA #	RESPONSE AREA NAME	FDRA	RADIO GROUP	CENTER POINT
USFS	D3	3-SOU2	Miller-Swartz	Lolo DNRC East	Central Zone	Holloman Saddle N46° 43.6' x W113° 50.9'

DISPATCH RESPONSE LEVEL	LOW	MODERATE	HIGH
FIRE RESPONSE at minimum	Notify Duty Officer	Notify Duty Officer	1 Engine ICT4

DISPATCH COMMENTS

SHARED BOUNDARY:

- Bitterroot National Forest
- Missoula County (LG04)

IF AIRCRAFT IS ORDERED:

- DIPSITES
 - Numerous open pools in Clark Fork River for dip sites.
 - Re-con open pools in Rock Creek for dip sites.
 - Valley of the Moon dipsite (private): N46° 40.928' x W113° 42.724'
 - Bear Run dipsite (private): N46° 47.174 x W113° 55.872 (in Bear Run Creek, SW side of response area, last used in 2017)
- HELIBASE
 - Consider using Handley helibase (private) in lower Swartz Creek for helibase operations as district has used this area in the past. N46° 44.898' x W113° 43.897'
 - Turah Helibase (private property near Turah exit, off I-90) N46° 49.850' x W113° 49.370'
 - Homestead or Minuteman hangar at Missoula Airport is also a possibility to run helibase operations.
- MEDEVAC SITES
 - Consider using Handley helibase (private) in lower Swartz Creek for helibase operations as district has used this area in the past. N46° 44.898' x W113° 43.897'
 - Turah Helibase (private property near Turah exit, off I-90) N46° 49.850' x W113° 49.370'
 - Homestead or Minuteman hangar at Missoula Airport is also a possibility to run helibase operations.

KNOWN HAZARDS:

- Suppressing fire near or under BPA power lines.
- Potential for vehicle traffic on Rock Creek Road during summer months. Road is very tight for engines and other large trucks in certain areas.
- Old private timber company connector roads from Deer/Bear Saddle to Holloman Saddle may require some brushing and kicking of rocks.
- History of illegal shooting in the Plant Creek drainage on the SW corner of the response area.

NOTIFICATIONS:

- If smoke report is within 1 nautical mile from a district/unit boundary, notify the appropriate Duty Officer
- If smoke report is within 1 nautical mile from a neighboring dispatch center, notify the appropriate center.
- If suppression occurs within proximity of BPA powerlines or fire dictates otherwise, contact BPA personnel.
- Contact Missoula Unit Duty Officer regarding state ground across the divide and to the west of the response area (west of Miller Creek and the Eightmile Creek area).

DUTY OFFICER CONSIDERATIONS:

- ACCESS
 - Road access for the west portion of this response area are the Miller Creek, Pattee Canyon, and Deer Creek Road systems. Travel via Miller Creek to Holloman Saddle from Fort Missoula is approximately 50 minutes.
 - From Interstate 90, access to the northern portion of this response area is through Deer Creek, Crystal Creek Road system; Allen Creek thru Turah Exit; Swartz Creek thru Clinton Exit; and Valley of the Moon thru Rock Creek Exit.
 - The best access to upper Gilbert Creek, north of the Welcome Creek Wilderness, is via Swartz Creek, thru the Clinton Exit.
 - Trail access and forest system trails in this response area are limited, however a vast road system exists for access.
- CAMPS
 - Handley helibase (private) has been used in the past as both a helibase and ICP.
 - Beavertail ICP (private) has been used as an ICP and helibase in 2017 during Sapphire Complex.
- LAND USE AGREEMENTS
 - Contact MDC if land use agreements are needed.
 - Need owner name, address, lat/long of property, phone number, and an email address for dispatch to send resource order
 - Past land use agreements in this area are:
 - Handley helibase (Handley property): N46° 44.898' x W113° 43.897'
 - Valley of the Moon dipsite: N46° 40.928' x W113° 42.724'
 - Spooner Medevac (Anderson property): N46° 43.805' x W113° 55.023' (upper Miller Creek)
 - Greenough Medevac: N46° 47.313' x W113° 44.919' (mouth of Greenough Creek)
 - Beavertail ICP (Cochrell property): N46° 43.336' x W113° 34.743'
 - *Missoula Ranger District Fire Management Google COP has contact info
- MAJOR VALUES
 - Upper Miller Creek residents and private property.
 - Residents and private property along I-90 corridor.
 - BPA Powerline and corridor.
 - Smoke and fire impacts to I-90 corridor.
 - Private property and residences along lower Rock Creek corridor.
 - Electronic sites on Miller Peak.
 - Timber values in Allen Creek, Greenough Creek, Swartz Creek, Gilbert Creek, and Moccasin Creek.
 - Forest Service recreation trail corridors.
- OTHER CONSIDERATIONS
 - Determine if additional resources are necessary
 - Make standard notifications
 - If it is a human start, order an INVF. If fire is human caused with criminal potential, order a USFS LEO.
 - Continue to look for medevac sites outside of current known locations, especially in Swartz Creek area.
 - There is potential for future ICP/helibase operations in upper Miller Creek in large private fields, potentially where Spooner Medevac exists.
 - Good vantage points of response area from Holloman Saddle and Iris Point

3-SOU3 D3 – Beavertail South

AGENCY	UNIT	RESPONSE AREA #	RESPONSE AREA NAME	FDRA	RADIO GROUP	CENTER POINT
USFS	D3	3-SOU3	Beavertail-South	Lolo DNRC East	Central Zone	Beavertail Exit N46° 43.5' x W113° 34.5'

DISPATCH RESPONSE LEVEL	LOW	MODERATE	HIGH
FIRE RESPONSE at minimum	Notify Duty Officer	Notify Duty Officer	1 Engine ICT4

DISPATCH COMMENTS

SHARED BOUNDARY:

- Missoula County (LG04)
- DNRC Missoula Unit (MSO)
- Beaverhead-Deerlodge National Forest

IF AIRCRAFT IS ORDERED:

- DIPSITES
 - Numerous open pools in Clark Fork River for dip sites.
 - Numerous open pools in Rock Creek for dip sites.
 - Valley of the Moon dipsite (private): N46° 40.928' x W113° 42.724'
 - Ranch Creek dipsite (private): N46° 33.899' x W113° 38.783'
- HELIBASE
 - Heffernan ranch (private) for helibase operations as district has used this area in the past.
N46° 39.200' x W113° 39.200'
 - Beavertail Helibase (private) was used in Sapphire Complex in 2017 as well as ICP.
N46° 43.336' x W113° 34.743'
- MEDEVAC SITES
 - Grizzly Creek Medevac (FS): N46° 34.434' x W113° 39.393'
 - Heffernan Medevac (private): N46° 39.200' x W113° 39.200'
 - Valley of the Moon Medevac (private): N46° 41.770' x W113° 40.300'
 - Whitetail Medevac (FS): N46° 40.153 x W113° 33.431'
 - Tyler Saddle Medevac (FS): N46° 39.080' x W113° 31.384'
 - Wahlquist Medevac (private): N46° 30.461' x W113° 46.373'

KNOWN HAZARDS:

- Suppressing fire near or under BPA power lines.
- Potential for vehicle traffic on Rock Creek Road during summer months. Road is very tight for engines and other large trucks in certain areas.
- Do not recommend engine access beyond Brewster Creek/Edelman Creek Road junction before heading up to Sliderock area. Pick-up truck only or UTV.

NOTIFICATIONS:

- If smoke report is within 1 nautical mile from a neighboring dispatch center, notify the appropriate center.
- If smoke report is within 1 nautical mile from a district/unit boundary, notify the appropriate Duty Officer
- Granite County Sheriff's Office if potential for evacuations
- If suppression occurs within proximity of BPA powerlines or fire dictates otherwise, contact BPA personnel.
- Contact DNRC Missoula Unit Duty Officer regarding state-protected ground in lower Tyler Creek, Bateman Creek, and Gillespie Creek.

DUTY OFFICER CONSIDERATIONS:

- ACCESS
 - Road access for this response area is Rock Creek Rd. Exit 126 off Interstate 90. Approx. 40 minutes travel time to Rock Creek exit. Approx. One-hour travel time to Brewster Creek.
 - Best road access to Sliderock area is via Brewster Creek (please see Known Hazards section)
 - Road access area into Welch/Gillespie/Whitetail Saddle area is through the Beavertail exit. Approximately 50 minutes travel time from Fort Missoula to Beavertail exit (mile-marker 130 on I-90).
 - Road access to Tyler Creek is via Bearmouth Exit from I-90 (mile mark 138), approx. 55-minute travel time from Fort Missoula.
 - Trail access in this response area is:
 - Babcock Mountain trailhead (#10 located within Rock Creek drainage).
 - Babcock Creek trailhead (#91 located within Rock Creek drainage).
 - Tyler Creek trailhead (#1192 located within Tyler Creek drainage).
 - John Long trail (#21, near Strawberry Mountain).
 - Tyler Point trail (#243).
- CAMPS
 - Heffernan Ranch has been used as both a helibase and ICP in the past.
 - Beavertail ICP has been used as an ICP and helibase in 2017 during Sapphire Complex.
 - There exists a large, open field of private property adjacent to Tyler Creek Road gate, just off Bearmouth exit that would be a candidate for an ICP/helibase as well.
- LAND USE AGREEMENTS
 - Contact MDC if land use agreements are needed.
 - Need owner name, address, lat/long of property, phone number, and an email address for dispatch to send resource order
 - Past land use agreements in this area are:
 - Heffernan ranch: N46° 39.200' x W113° 39.200'
 - Valley of the Moon dipsite: N46° 40.928' x W113° 42.724'
 - Ranch Creek dipsite (Castleberry property): N46° 33.899' x W113° 38.783'
 - Beavertail ICP (Cochrell property): N46° 43.336' x W113° 34.743'
 - Walhquist Medevac (Dahlgren property): N46° 30.461' x W113° 46.373'
 - *Missoula Ranger District Fire Management Google COP has contact information
- MAJOR VALUES
 - Brewster Creek subdivision (Sliderock residents included).
 - Residents along I-90 corridor.
 - BPA Powerline and corridor.
 - Smoke and fire impacts to I-90 corridor.
 - Private property and residences along lower Rock Creek corridor.
 - Timber values in Kitchen Gulch and travel corridors between Welch-Gillespie Saddle and Brewster-Tyler Saddle.
 - Forest Service recreation trail corridors
- OTHER CONSIDERATIONS
 - Determine if additional resources are necessary
 - Make standard notifications
 - If it is a human start, order an INV. If fire is human caused with criminal potential, order a USFS LEO.
 - Continue to look for medevac sites outside of current known locations.
 - There is potential for future ICP/helibase operations at the mouth of Tyler Creek in large private field.
 - Goat Creek fire in 2017 provided large fire scar in southwest portion of this response area.

3-SOU4 D3 – Welcome Cr Wilderness

AGENCY	UNIT	RESPONSE AREA #	RESPONSE AREA NAME	FDRA	RADIO GROUP	CENTER POINT
USFS	D3	3-SOU4	Welcome Creek Wilderness	Lolo DNRC East	Central Zone	Cleveland Mountain N46° 36.9' x W113° 48.9'

DISPATCH RESPONSE LEVEL	LOW	MODERATE	HIGH
FIRE RESPONSE at minimum	Notify Duty Officer	Notify Duty Officer	Notify Duty Officer

DISPATCH COMMENTS

SHARED BOUNDARY:

- Bitterroot National Forest
- DNRC Missoula Unit (MSO)

IF AIRCRAFT IS ORDERED:

- DIPSITES
 - Numerous open pools in Rock Creek for dip sites.
 - Ranch Creek dipsite (private): N46° 33.899' x W113° 38.783'.
 - Valley of the Moon dipsite (private): N46° 40.928' x W113° 42.724'
- HELIBASE
 - Heffernan ranch (private) for helibase operations as district has used this area in the past. N46° 39.200' x W113° 39.200'
 - Dahlgren property (private, near Wahlquist Trailhead) has been used for helispot operations as well. N46° 30.461' x W113° 46.373'
- MEDEVAC SITES
 - Cinnabar Medevac (FS): N46° 34.764' x W113° 49.744'
 - Grizzly Creek Medevac (FS): N46° 34.434' x W113° 39.393'
 - Heffernan Medevac (private): N46° 39.200' x W113° 39.200'
 - Wahlquist Medevac (private): N46° 30.461' x W113° 46.373'
 - Welcome Creek Medevac (FS): N46° 38.57' x W113° 43.372'

KNOWN HAZARDS:

- If crossing Rock Creek, the creek crossing is a hazard unless you are using a bridge.
- Potential for vehicle traffic on Rock Creek Road during summer months. Road is very tight for engines and other large trucks in certain areas.

NOTIFICATIONS:

- If smoke report is within 1 nautical mile from a district/unit boundary, notify the appropriate Duty Officer
- If smoke report is within 1 nautical mile from Bitterroot National Forest, notify Bitterroot (Hamilton) Dispatch Center.
- Contact Granite County Sheriff's Office if potential for evacuations

DUTY OFFICER CONSIDERATIONS:

- ACCESS
 - On southwest side of wilderness boundary road access best access is from Ambrose Saddle (east of Stevensville). Drive Hwy 93 to Florence, take a left on Eastside Hwy at stoplight, drive approx. 7 miles east and south on Eastside Hwy, then take a left on Ambrose Creek rd.
 - Drive approx. 11 miles until you arrive at Ambrose Saddle (approx. 1-hour travel time from Fort Missoula). From Ambrose Saddle take forest road 2129 north toward Cinnabar Saddle to Forest Service trailhead #313.
 - On north and west side of wilderness boundary, best access is Interstate 90 to Clinton, MT, and then the Swartz Creek Road (#502), stay left at West Fork Swartz Junction, onto FS road # 4243 and eventually a left on Welcome Mountain Road (#4249). Welcome Mountain trailhead is the end of the road. Approx. travel time of 2.5 hours. Trail access from trailhead is #142 and #178.
 - On east side of wilderness boundary, best road access for lower to mid-level terrain is Rock Creek rd. Exit 126 off Interstate 90. Approx. 40 minutes travel time to Rock Creek exit. Approx. 1 hour 10 minutes travel time to Welcome Creek trailhead (#225) and Dalles campground. Other trail access is Solomon Trail (#178) from Sawmill fishing access on north end of wilderness boundary and Cinnamon Bear Creek trail #93 on south end.
 - Limited road access area in this response area. Unless right off the road or near subdivisions, engines may not be useful in this country. Consider helicopter operations for any ground insertions.
- CAMPS
 - Spike camps/ICP's have been set up in the past at Ambrose Saddle for mid-level and higher terrain fires.
 - Spike camps can be set up in Harry's Flat campground, Grizzly campground for lower to mid-elevation fires. If used notify rec staff.
 - Heffernan Ranch has been used as both a helibase and ICP in the past.
- LAND USE AGREEMENTS
 - Contact MDC if land use agreements are needed.
 - Need owner name, address, lat/long of property, phone number, and an email address for dispatch to send resource order
 - Past land use agreements in this area are:
 - Heffernan Ranch: N46° 39.200' x W113° 39.200'
 - Dahlgren Property: N46° 30.461' x W113° 46.373'
 - Ranch Creek dipsite: N46° 33.899' x W113° 38.783'
 - Valley of the Moon dipsite: N46° 40.928' x W113° 42.724'
 - *Missoula Ranger District Fire Management Google COP has contact information
- MAJOR VALUES
 - Brewster Creek subdivision.
 - Trout Haven subdivision.
 - Ranch Creek homeowners.
 - Private property and residences along Rock Creek corridor.
 - Forest Service campgrounds, dispersed camp sites, and occupants.
 - Forest Service portable RAWS site (Cinnabar Point area).
 - Forest Service recreation trail corridors.
- OTHER CONSIDERATIONS
 - Quigg Peak or Mineral Peak repeaters may be used for communications back to MDC
 - Determine if additional resources are necessary
 - Make standard notifications
 - If it is a human start, order an INV. If fire is human caused with criminal potential, order a USFS LEO.

3-SOU5 D3 – Rock Creek West

AGENCY	UNIT	RESPONSE AREA #	RESPONSE AREA NAME	FDRA	RADIO GROUP	CENTER POINT
USFS	D3	3-SOU5	Rock Creek West	Lolo DNRC East	Central Zone	Ambrose Saddle N46° 31.0' x W113° 50.9'

DISPATCH RESPONSE LEVEL	LOW	MODERATE	HIGH
FIRE RESPONSE at minimum	1 IA Module	1 IA Module	1 IA Module

DISPATCH COMMENTS

SHARED BOUNDARY:

- Bitterroot National Forest

IF AIRCRAFT IS ORDERED:

- DIPSITES
 - Numerous open pools in Rock Creek for dip sites.
 - Microburst site in upper Rock Creek: approx. 25 mile-marker at N46° 26. 475' x W113° 45.804' (consider dipsite manager)
 - Burnt Fork dipsite (private): N46° 27.700' x W113° 56.500'
- HELIBASE
 - Stevensville airport has been used in the past for helibase operations.
 - Heffernan ranch (private)for helibase operations as district has used this area in the past. N46° 39.200' x W113° 39.200'
 - Dahlgren property (private, near Wahlquist Trailhead) has been used for helispot operations as well. N46° 30.461' x W113° 46.373'
 - Miller Flats subdivision (private) open field has been used as a helispot in the past as well N46 28.723' x W113 46.524'
 - Burnt Fork helibase (private): N46° 27.700' x W113° 56.500'
- MEDEVAC SITES
 - Ambrose Saddle Medevac (FS): N46° 31.003' x W113° 50.945'
 - Heffernan Medevac (private): N46° 39.200' x W113° 39.200'
 - Hogback Medevac (FS): N46° 24.642' x W113° 42.057'
 - Miller Flats Medevac (private): N46° 28.723' x W113° 46.524'
 - Stoney Creek Medevac (FS): N46° 20.728' x W113° 37.242' (upper Rock ck. on B-D NF)
 - Wahlquist Medevac (private): N46° 30.461' x W113° 46.373'

KNOWN HAZARDS:

- If crossing Rock Creek, the creek crossing is a hazard unless you are using a bridge.
- Potential for vehicle traffic on Rock Creek Road during summer months.
- Road is very tight for engines and other large trucks in certain areas.

NOTIFICATIONS:

- If smoke report is within 1 nautical mile from Bitterroot National Forest, notify Bitterroot (Hamilton) Dispatch Center.
- Contact Granite County Sheriff's Office if potential for evacuations

DUTY OFFICER CONSIDERATIONS:

- ACCESS
 - Best road access to mid-level and higher terrain is from Ambrose Saddle, east of Stevensville. Drive Hwy 93 to Florence, take a left on Eastside Hwy at stoplight, drive approx. 7 miles east and south on Eastside Hwy, then take a left on Ambrose Creek rd. Drive approx. 11 miles until you arrive at Ambrose Saddle. Approx. 1-hour travel time from Fort Missoula.
 - Best road access to lower to mid-level terrain is Rock Creek rd. Exit 126 off Interstate 90. Approx. 40 minutes travel time to Rock Creek exit. Approx. 1.5 hours travel time to Miller Flats subdivision.
 - Limited road access area in this response area. Unless right off the road or near subdivisions, engines may not be useful in this country. Consider helicopter operations for any ground insertions.
 - Trail access in this response area is:
 - Easthouse National Recreation trail (#313).
 - Cinnamon Bear Creek trailhead (#93).
 - Wahlquist trailhead (#233).
 - Eagle Creek trailhead (#215).
 - Wyman Creek trailhead (#226).
 - Big Spring Creek/Eagle Point trail (#1269).
- CAMPS
 - Spike camps/ICP's have been set up in the past at Ambrose Saddle for mid-level and higher terrain fires.
 - Spike camps have been set up in Harry's Flat campground, Siria, and Bitterroot Flats campground for lower elevation fires. If used notify rec staff.
- LAND USE AGREEMENTS
 - Contact MDC if land use agreements are needed.
 - Need owner name, address, lat/long of property, phone number, and an email address for dispatch to send resource order
 - Past land use agreements in this area are:
 - Dahlgren property: N46° 30.461' x W113° 46.373'
 - Miller Flats (Heinert property): N46° 28.723' x W113° 46.524'
 - Burnt Fork property: N46° 27.700' x W113° 56.500'
 - *Missoula Ranger District Fire Management Google COP has contact information
- MAJOR VALUES
 - Truthhaven subdivision.
 - Miller Flat subdivision.
 - Williams Gulch subdivision.
 - Private property and residences along Rock Creek corridor.
 - Forest Service historic cabins (Rock Creek Cabin, Hogback Cabin, Morgan Case).
 - Forest Service campgrounds, dispersed camp sites, and occupants.
 - Forest Service portable RAWs site (Cinnabar Point area).
 - Forest Service recreation trail corridors (especially Easthouse National Rec. trail #313).
 - Welcome Creek Wilderness considerations.
- OTHER CONSIDERATIONS
 - Quigg Peak repeater may be used for communications back to MDC.
 - Determine if additional resources are necessary
 - Make standard notifications
 - If it is a human start, order an INVF. If fire is human caused with criminal potential, order a USFS LEO.
 - If fire is located near Truthhaven Subdivision (just south of Wahlquist Trailhead), consider ordering additional resources right away. Road access to Trout Haven is approx. 19.5-mile marker up Rock Creek rd.
 - Miller Flats Contacts:
 - Fred Bohlman (west side of Rock Creek) and George & Karen Brooker (east side of Rock Creek)
*see Google COP for contact info.
 - Fred Bohlman does have cell phone booster at his residence, and it works pretty well.

3-SOU6 D3 – Rock Creek East

AGENCY	UNIT	RESPONSE AREA #	RESPONSE AREA NAME	FDRA	RADIO GROUP	CENTER POINT
USFS	D3	3-SOU6	Rock Creek East	Lolo DNRC East	Central Zone	Ranch Creek N46° 34.8' x W113° 40.2'

DISPATCH RESPONSE LEVEL	LOW	MODERATE	HIGH
FIRE RESPONSE at minimum	1 IA Module	1 IA Module	1 IA Module

DISPATCH COMMENTS

SHARED BOUNDARY:

- Beaverhead-Deerlodge National Forest

IF AIRCRAFT IS ORDERED:

- DIPSITES
 - Numerous open pools in Rock Creek for dip sites.
 - Microburst site in upper Rock Creek: approx. 25-mile marker at N46° 26. 475' x W113° 45.804'
 - Ranch Creek dipsite (private): N46° 33.899' x W113° 38.783'
- HELIBASE
 - Heffernan helibase (private): N46° 39.200' x W113° 39.200'
 - Dahlgren helibase (private by Wahlquist Trailhead): N46° 30.461' x W113° 46.373'
- MEDEVAC SITES
 - Grizzly Creek Medevac (FS): N46° 34.434' x W113° 39.393'
 - Heffernan Medevac (private): N46° 39.200' x W113° 39.200'
 - Hogback Medevac (FS): N46° 24.642' x W113° 42.057'
 - Miller Flats Medevac (private): N46° 28.723' x W113° 46.524'
 - Stoney Creek Medevac (FS): N46° 20.728' x W113° 37.242' (B-D NF)
 - Wahlquist Medevac (private): N46° 30.461' x W113° 46.373'

KNOWN HAZARDS:

- If crossing Rock Creek, the creek crossing is a hazard unless you are using a bridge.
- Potential for vehicle traffic on Rock Creek Road during summer months. Road is very tight for engines and other large trucks in certain areas.
- Do not recommend engine access beyond Brewster Creek/Edelman Creek Road junction before heading up to Sliderock area. Pick-up truck only or UTV.

NOTIFICATIONS:

- If smoke report is within 1 nautical mile from Beaverhead-Deerlodge National Forest, notify Dillon Dispatch Center
- Contact Granite County Sheriff's office if evacuations are foreseen.

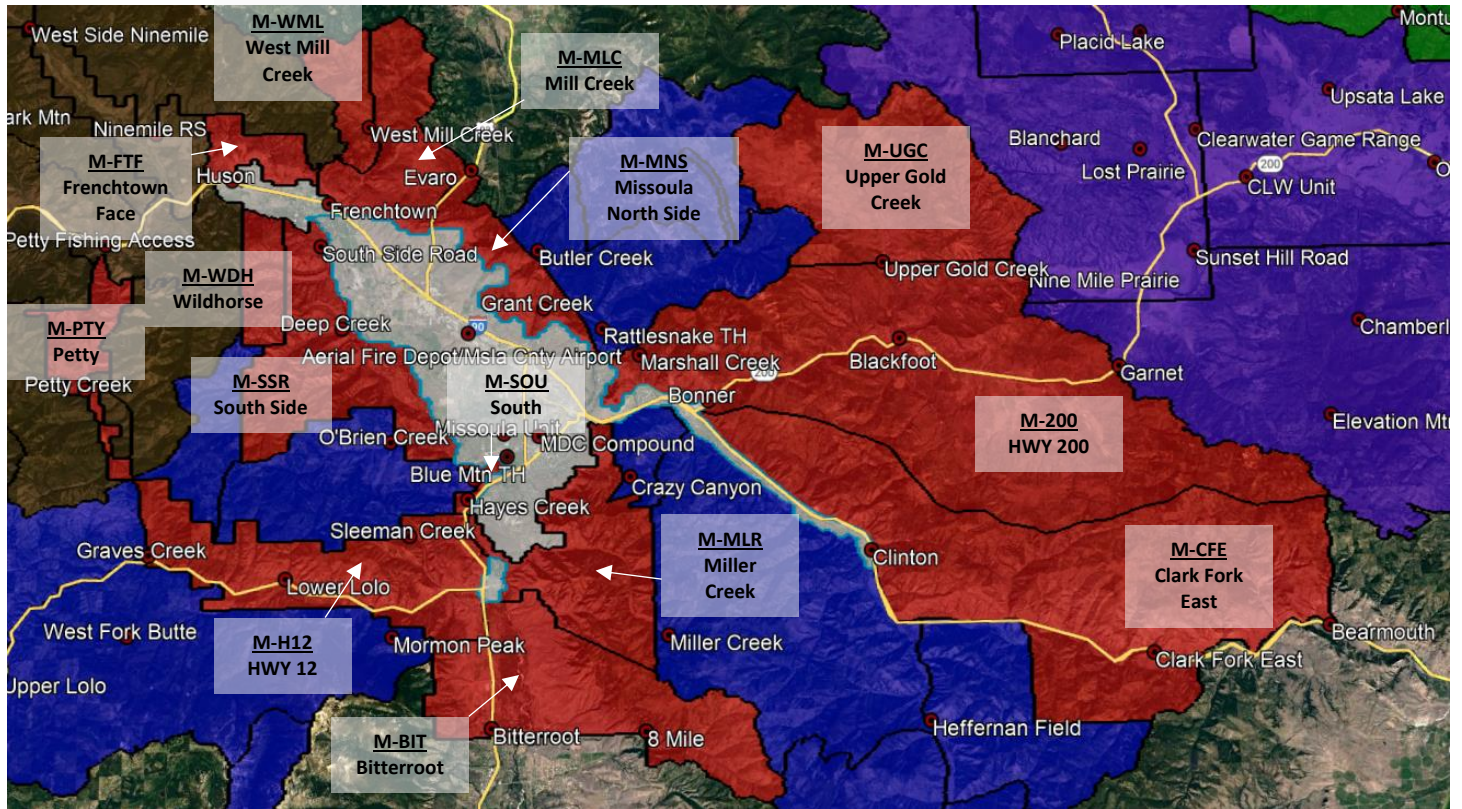
DUTY OFFICER CONSIDERATIONS:

- ACCESS
 - Best road access for this response area is Rock Creek rd. Exit 126 off Interstate 90. Approx 40 minutes travel time to Rock Creek exit. Approx. 1 hour 10 minutes travel time to Dalles campground.
 - Best road access to Sliderock area is via Brewster Creek (please see Known Hazards section)
 - Limited road access area in this response area. Unless right off the road or near subdivisions, engines may not be useful in this country. Consider helicopter operations for any ground insertions.
 - Trail access in this response area is:
 - Grizzly Creek trailhead (#208 located within Ranch Creek drainage).
 - Ranch Creek trailhead (#65).
 - Butte Cabin trailhead (#224 & #227).
 - Hogback trailhead (#268).
 - Sandstone trailhead (#228).
- CAMPS
 - Spike camps can be set up in Harry's Flat campground, Grizzly campground for lower to mid-elevation fires. If used notify district rec staff.
 - Heffernan Ranch has been used as both a helibase and ICP in the past.
 - Beavertail ICP has been used as an ICP and helibase in 2017 during Sapphire Complex.
- LAND USE AGREEMENTS
 - Contact MDC if land use agreements are needed.
 - Need owner name, address, lat/long of property, phone number, and an email address for dispatch to send resource order
 - Past land use agreements in this area are:
 - Heffernan ranch: N46° 39.200' x W113° 39.200'
 - Dahlgren property: N46° 30.461' x W113° 46.373'
 - Ranch Creek dip site (Castleberry property): N46° 33.899' x W113° 38.783'
 - Beavertail ICP (Cochrell property): N46° 43.336' x W113° 34.743'
 - Miller Flats (Heinert property): N46° 28.723' x W113° 46.524'
 - *Missoula Ranger District Fire Management Google COP has contact information
- MAJOR VALUES
 - Brewster Creek subdivision (Sliderock residents included).
 - Truthaven subdivision.
 - Miller Flat subdivision.
 - Williams Gulch subdivision.
 - Ranch Creek homeowners.
 - Private property and residences along Rock Creek corridor.
 - Forest Service historic cabins (Rock Creek Cabin, Hogback Cabin, Morgan Case).
 - Forest Service campgrounds, dispersed camp sites, and occupants.
 - Forest Service repeater site (Quigg Peak).
 - Brewster Creek private mining claims.
 - Forest Service recreation trail corridors.
- OTHER CONSIDERATIONS
 - Quigg Peak repeater may be used for communications back to MDC.
 - Fred Bohlman does have a cell phone booster at his residence, and it works pretty well. His property is located in Miller Flat subdivision, on the west side of the creek. Only trucks should go across the bridge (which has a private gate). Turn left at the intersection and Fred's place is the last house after you head upstream (south), at the end of the road.

THIS PAGE INTENTIONALLY LEFT BLANK

Central Zone – Missoula Unit (MSO)

DNRC Southwest Land Office



M-PTY MSO – Petty

AGENCY	UNIT	RESPONSE AREA #	RESPONSE AREA NAME	FDRA	RADIO GROUP	CENTER POINT
DNRC	MSO	M-PTY	Petty	Lolo DNRC East	Central Zone	South Fork Petty N46° 50.9' x W114° 26.2'

DISPATCH RESPONSE LEVEL	LOW	MODERATE	HIGH
FIRE RESPONSE <i>at minimum</i>	1 Engine	1 Engine	2 Engines Place DNRC Helicopter on Standby

DISPATCH COMMENTS

<p>SHARED BOUNDARY:</p> <ul style="list-style-type: none"> • Ninemile Ranger District (D4) • Missoula Ranger District (D3) • Missoula County (LG04)
<p>IF AIRCRAFT IS ORDERED:</p> <ul style="list-style-type: none"> • If requested, dispatch DNRC helicopter first, if available. If no State helicopter is available, dispatch closest available helicopter.
<p>KNOWN HAZARDS:</p> <ul style="list-style-type: none"> • Unknown
<p>NOTIFICATIONS:</p> <ul style="list-style-type: none"> • Unit Duty Officer • If the smoke report is within 1 nautical mile of district/unit boundary, contact the appropriate Duty Officer
<p>DUTY OFFICER CONSIDERATIONS:</p> <ul style="list-style-type: none"> • Determine if additional resources are necessary. • Make standard notifications.

M-H12 MSO – HWY 12

AGENCY	UNIT	RESPONSE AREA #	RESPONSE AREA NAME	FDRA	RADIO GROUP	CENTER POINT
DNRC	MSO	M-H12	Highway 12	Lolo DNRC East	Central Zone	Woodman N46° 45.6' x -114 15.1'

DISPATCH RESPONSE LEVEL	LOW	MODERATE	HIGH
FIRE RESPONSE <i>at minimum</i>	1 Engine	1 Engine	2 Engines Place DNRC Helicopter on Standby

DISPATCH COMMENTS

<p>SHARED BOUNDARY:</p> <ul style="list-style-type: none"> • Missoula Ranger District (D3) • Ninemile Ranger District (D4) • Missoula County (LG04) • Bitterroot National Forest
<p>IF AIRCRAFT IS ORDERED:</p> <ul style="list-style-type: none"> • Dispatch State helicopter first, if available. If no State helicopter is available, dispatch closest available helicopter.
<p>KNOWN HAZARDS:</p> <ul style="list-style-type: none"> • Unknown
<p>NOTIFICATIONS:</p> <ul style="list-style-type: none"> • Unit Duty Officer • If the smoke report is within 1 nautical mile of district/unit boundary, notify the appropriate Duty Officer • If the smoke report is within 1 nautical mile of Bitterroot National Forest, notify the Bitterroot (Hamilton) Dispatch Center.
<p>DUTY OFFICER CONSIDERATIONS:</p> <ul style="list-style-type: none"> • Determine if additional resources are necessary. • Make standard notifications.

M-SSR MSO – South Side

AGENCY	UNIT	RESPONSE AREA #	RESPONSE AREA NAME	FDRA	RADIO GROUP	CENTER POINT
DNRC	MSO	M-SSR	South Side	Lolo DNRC East	Central Zone	Harper's Bridge N46° 55.9' x 114° 12.6'

DISPATCH RESPONSE LEVEL	LOW	MODERATE	HIGH
FIRE RESPONSE <i>at minimum</i>	1 Engine	1 Engine	2 Engines Place DNRC Helicopter on Standby

DISPATCH COMMENTS

<p>SHARED BOUNDARY:</p> <ul style="list-style-type: none"> • Missoula Ranger District (D3) • Missoula County (LG04)
<p>IF AIRCRAFT IS ORDERED:</p> <ul style="list-style-type: none"> • Dispatch State helicopter first, if available. If no State helicopter is available, dispatch closest available helicopter.
<p>KNOWN HAZARDS:</p> <ul style="list-style-type: none"> • Unknown
<p>NOTIFICATIONS:</p> <ul style="list-style-type: none"> • Unit Duty Officer • If the smoke report is within 1 nautical mile of district/unit boundary, notify the appropriate Duty Officer
<p>DUTY OFFICER CONSIDERATIONS:</p> <ul style="list-style-type: none"> • Determine if additional resources are necessary. • Make standard notifications.

M-WDH MSO – Wildhorse

AGENCY	UNIT	RESPONSE AREA #	RESPONSE AREA NAME	FDRA	RADIO GROUP	CENTER POINT
DNRC	MSO	M-WDH	Wildhorse	Lolo DNRC East	Central Zone	Rock Creek Road N46° 58.0' x 114° 17.1'

DISPATCH RESPONSE LEVEL	LOW	MODERATE	HIGH
FIRE RESPONSE <i>at minimum</i>	1 Engine	1 Engine	2 Engines

DISPATCH COMMENTS

<p>SHARED BOUNDARY:</p> <ul style="list-style-type: none"> • Missoula Ranger District (D3) • Ninemile Ranger District (D4) • Missoula County (LG04)
<p>IF AIRCRAFT IS ORDERED:</p> <ul style="list-style-type: none"> • Dispatch State helicopter first, if available. If no State helicopter is available, dispatch closest available helicopter.
<p>KNOWN HAZARDS:</p> <ul style="list-style-type: none"> • Unknown
<p>NOTIFICATIONS:</p> <ul style="list-style-type: none"> • Unit Duty Officer • If the smoke report is within 1 nautical mile of district/unit boundary, notify the appropriate Duty Officer
<p>DUTY OFFICER CONSIDERATIONS:</p> <ul style="list-style-type: none"> • Determine if additional resources are necessary. • Make standard notifications.

M-FTF MSO – Frenchtown Face

AGENCY	UNIT	RESPONSE AREA #	RESPONSE AREA NAME	FDRA	RADIO GROUP	CENTER POINT
DNRC	MSO	M-FTF	Frenchtown Face	Lolo DNRC East	Central Zone	Houle Creek Road N47° 3.1' x W114° 17.6'

DISPATCH RESPONSE LEVEL	LOW	MODERATE	HIGH
FIRE RESPONSE <i>at minimum</i>	1 Engine	1 Engine	2 Engines Place DNRC Helicopter on Standby

DISPATCH COMMENTS

<p>SHARED BOUNDARY:</p> <ul style="list-style-type: none"> • Ninemile Ranger District (D4) • Missoula County (LG04)
<p>IF AIRCRAFT IS ORDERED:</p> <ul style="list-style-type: none"> • Dispatch State helicopter first, if available. If no State helicopter is available, dispatch closest available helicopter.
<p>KNOWN HAZARDS:</p> <ul style="list-style-type: none"> • Unknown
<p>NOTIFICATIONS:</p> <ul style="list-style-type: none"> • Unit Duty Officer • If the smoke report is within 1 nautical mile of district/unit boundary, notify the appropriate Duty Officer
<p>DUTY OFFICER CONSIDERATIONS:</p> <ul style="list-style-type: none"> • Determine if additional resources are necessary • Make standard notifications

M-WML MSO – West Mill Creek

AGENCY	UNIT	RESPONSE AREA #	RESPONSE AREA NAME	FDRA	RADIO GROUP	CENTER POINT
DNRC	MSO	M-WML	West Mill Creek	Lolo DNRC East	Central Zone	Spring Creek N47° 4.1' x 114° 11.2'

DISPATCH RESPONSE LEVEL	LOW	MODERATE	HIGH
FIRE RESPONSE at minimum	1 Engine	1 Engine	2 Engines

DISPATCH COMMENTS

<p>SHARED BOUNDARY:</p> <ul style="list-style-type: none"> • Confederated Salish and Kootenai Tribes (CSKT - Flathead Agency) • Ninemile Ranger District (D4) • Missoula County (LG04)
<p>IF AIRCRAFT IS ORDERED:</p> <ul style="list-style-type: none"> • Dispatch State helicopter first, if available. If no State helicopter is available, dispatch closest available helicopter.
<p>KNOWN HAZARDS:</p> <ul style="list-style-type: none"> • Unknown
<p>NOTIFICATIONS:</p> <ul style="list-style-type: none"> • Unit Duty Officer • If the smoke report is within 1 nautical mile of district/unit boundary, notify the appropriate Duty Officer • If the smoke report is within 1 nautical mile of CSKT, notify Ronan Dispatch
<p>DUTY OFFICER CONSIDERATIONS:</p> <ul style="list-style-type: none"> • Determine if additional resources are necessary. • Make standard notifications.

M-MLC MSO – Mill Creek

AGENCY	UNIT	RESPONSE AREA #	RESPONSE AREA NAME	FDRA	RADIO GROUP	CENTER POINT
DNRC	MSO	M-MLC	Mill Creek	Lolo DNRC East	Central Zone	Spring Hill Road N47° 1.2' x 114° 12.2'

DISPATCH RESPONSE LEVEL	LOW	MODERATE	HIGH
FIRE RESPONSE <i>at minimum</i>	1 Engine	1 Engine	2 Engines Place DNRC Helicopter on Standby

DISPATCH COMMENTS

<p>SHARED BOUNDARY:</p> <ul style="list-style-type: none"> • Confederated Salish and Kootenai Tribes (CSKT – Flathead Agency) • Ninemile Ranger District (D4) • Missoula County (LG04)
<p>IF AIRCRAFT IS ORDERED:</p> <ul style="list-style-type: none"> • Dispatch State helicopter first, if available. If no State helicopter is available, dispatch closest available helicopter.
<p>KNOWN HAZARDS:</p> <ul style="list-style-type: none"> • Unknown
<p>NOTIFICATIONS:</p> <ul style="list-style-type: none"> • Unit Duty Officer. • If the smoke report is within 1 nautical mile of district/unit boundary, notify the appropriate Duty Officer • If the smoke report is within 1 nautical mile of CSKT, notify Ronan Dispatch
<p>DUTY OFFICER CONSIDERATIONS:</p> <ul style="list-style-type: none"> • Determine if additional resources are necessary. • Make standard notifications

M-MNS MSO – Missoula North Side

AGENCY	UNIT	RESPONSE AREA #	RESPONSE AREA NAME	FDRA	RADIO GROUP	CENTER POINT
DNRC	MSO	M-MNS	Missoula North Side	Lolo DNRC East	Central Zone	Butler Creek Road N46° 57.2° x W114° 4.8'

DISPATCH RESPONSE LEVEL	LOW	MODERATE	HIGH
FIRE RESPONSE <i>at minimum</i>	1 Engine	1 Engine	2 Engines Place DNRC Helicopter on Standby

DISPATCH COMMENTS

<p>SHARED BOUNDARY:</p> <ul style="list-style-type: none"> • Confederated Salish and Kootenai Tribes (CSKT - Flathead Agency) • Missoula Ranger District (D3) • Missoula County (LG04)
<p>IF AIRCRAFT IS ORDERED:</p> <ul style="list-style-type: none"> • Dispatch State helicopter first, if available. If no State helicopter is available, dispatch closest available helicopter.
<p>KNOWN HAZARDS:</p> <ul style="list-style-type: none"> • Unknown
<p>NOTIFICATIONS:</p> <ul style="list-style-type: none"> • Unit Duty Officer • If the smoke report is within 1 nautical mile of district/unit boundary, notify the appropriate Duty Officer • If the smoke report is within 1 nautical mile of CSKT, notify Ronan Dispatch
<p>DUTY OFFICER CONSIDERATIONS:</p> <ul style="list-style-type: none"> • Determine if additional resources are necessary. • Make standard notifications.

M-SOU MSO – South

AGENCY	UNIT	RESPONSE AREA #	RESPONSE AREA NAME	FDRA	RADIO GROUP	CENTER POINT
DNRC	MSO	M-SOU	South	Lolo DNRC East	Central Zone	Hayes Creek N46° 48.8' x W114° 5.6'

DISPATCH RESPONSE LEVEL	LOW	MODERATE	HIGH
FIRE RESPONSE <i>at minimum</i>	1 Engine	1 Engine	2 Engines Place DNRC Helicopter on Standby

DISPATCH COMMENTS

<p>SHARED BOUNDARY:</p> <ul style="list-style-type: none"> • Missoula Ranger District (D3) • Missoula County (LG04)
<p>IF AIRCRAFT IS ORDERED:</p> <ul style="list-style-type: none"> • Dispatch State helicopter first, if available. If no SWLO State helicopter is available, dispatch closest available helicopter.
<p>KNOWN HAZARDS:</p> <ul style="list-style-type: none"> • Unknown
<p>NOTIFICATIONS:</p> <ul style="list-style-type: none"> • Unit Duty Officer • If the smoke report is within 1 nautical mile of district/unit boundary, notify the appropriate Duty Officer
<p>DUTY OFFICER CONSIDERATIONS:</p> <ul style="list-style-type: none"> • Determine if additional resources are necessary • Make standard notifications

M-MLR MSO – Miller Creek

AGENCY	UNIT	RESPONSE AREA #	RESPONSE AREA NAME	FDRA	RADIO GROUP	CENTER POINT
DNRC	MSO	M-MLR	Miller Creek	Lolo DNRC East	Central Zone	Bear Run N46° 46.5' x W113° 57.0

DISPATCH RESPONSE LEVEL	LOW	MODERATE	HIGH
FIRE RESPONSE at minimum	1 Engine	1 Engine	2 Engines Place DNRC Helicopter on Standby

DISPATCH COMMENTS

<p>SHARED BOUNDARY:</p> <ul style="list-style-type: none"> • Missoula Ranger District (D3) • Missoula County (LG04)
<p>IF AIRCRAFT IS ORDERED:</p> <ul style="list-style-type: none"> • Dispatch State helicopter first, if available. If no SWLO State helicopter is available, dispatch closest available helicopter.
<p>KNOWN HAZARDS:</p> <ul style="list-style-type: none"> • Unknown
<p>NOTIFICATIONS:</p> <ul style="list-style-type: none"> • Unit Duty Officer • If the smoke report is within 1 nautical mile of district/unit boundary, notify the appropriate Duty Officer
<p>DUTY OFFICER CONSIDERATIONS:</p> <ul style="list-style-type: none"> • Determine if additional resources are necessary • Make standard notifications

M-BIT MSO – Bitterroot

AGENCY	UNIT	RESPONSE AREA #	RESPONSE AREA NAME	FDRA	RADIO GROUP	CENTER POINT
DNRC	MSO	M-BIT	Bitterroot	Lolo DNRC East	Central Zone	Baldy Mountain N46° 42.5' x W113° 58.8'

DISPATCH RESPONSE LEVEL	LOW	MODERATE	HIGH
FIRE RESPONSE at minimum	1 Engine	1 Engine	2 Engines Place DNRC Helicopter on Standby

DISPATCH COMMENTS

<p>SHARED BOUNDARY:</p> <ul style="list-style-type: none"> • Missoula Ranger District (D3) • Missoula County (LG04) • Bitterroot National Forest
<p>IF AIRCRAFT IS ORDERED:</p> <ul style="list-style-type: none"> • Dispatch State helicopter first, if available. If no State helicopter is available, dispatch closest available helicopter.
<p>KNOWN HAZARDS:</p> <ul style="list-style-type: none"> • Unknown
<p>NOTIFICATIONS:</p> <ul style="list-style-type: none"> • Unit Duty Officer • If the smoke report is within 1 nautical mile of district/unit boundary, notify the appropriate Duty Officer • If the smoke report is within 1 nautical mile of Bitterroot National Forest, notify Bitterroot (Hamilton) Dispatch Center
<p>DUTY OFFICER CONSIDERATIONS:</p> <ul style="list-style-type: none"> • Determine if additional resources are necessary • Make standard notifications

M-CFE MSO – Clark Fork East

AGENCY	UNIT	RESPONSE AREA #	RESPONSE AREA NAME	FDRA	RADIO GROUP	CENTER POINT
DNRC	MSO	M-CFE	Clark Fork East	Lolo DNRC East	Central Zone	Beavertail N46° 43.5' x W113° 34.5'

DISPATCH RESPONSE LEVEL	LOW	MODERATE	HIGH
FIRE RESPONSE <i>at minimum</i>	1 Engine	1 Engine	2 Engines

DISPATCH COMMENTS

SHARED BOUNDARY:

- Missoula Ranger District (D3)
- Clearwater Unit (CLW)
- Missoula County (LG04)
- Beaverhead-Deerlodge National Forest
- Anaconda Unit (ANC)

IF AIRCRAFT IS ORDERED:

- Dispatch State helicopter first, if available. If no State helicopter is available, dispatch closest available helicopter.

KNOWN HAZARDS:

- Unknown

NOTIFICATIONS:

- Unit Duty Officer
- If the smoke report is within 1 nautical mile of district/unit boundary, notify the appropriate Duty Officer
- If the smoke report is within 1 nautical mile of Beaverhead-Deerlodge National Forest or Anaconda Unit, notify Dillon Dispatch

DUTY OFFICER CONSIDERATIONS:

- Determine if additional resources are necessary.
- Make standard notifications.
- Contact BLM Duty Officer within one hour if fire location is determined to be on BLM ownership.

M-200 MSO – HWY 200

AGENCY	UNIT	RESPONSE AREA #	RESPONSE AREA NAME	FDRA	RADIO GROUP	CENTER POINT
DNRC	MSO	M-200	Highway 200	Lolo DNRC East	Central Zone	Johnsrud N46° 54.7' x W113° 40.3'

DISPATCH RESPONSE LEVEL	LOW	MODERATE	HIGH
FIRE RESPONSE <i>at minimum</i>	1 Engine	1 Engine	2 Engines Place DNRC Helicopter on Standby

DISPATCH COMMENTS

<p>SHARED BOUNDARY:</p> <ul style="list-style-type: none"> • Missoula Ranger District (D3) • Clearwater Unit (CLW) • Missoula County (LG04)
<p>IF AIRCRAFT IS ORDERED:</p> <ul style="list-style-type: none"> • Dispatch State helicopter first, if available. If no State helicopter is available, dispatch closest available helicopter
<p>KNOWN HAZARDS:</p> <ul style="list-style-type: none"> • Unknown
<p>NOTIFICATIONS:</p> <ul style="list-style-type: none"> • Unit Duty Officer • If the smoke report is within 1 nautical mile of district/unit boundary, notify the appropriate Duty Officer
<p>DUTY OFFICER CONSIDERATIONS:</p> <ul style="list-style-type: none"> • Determine if additional resources are necessary • Make standard notifications • Contact BLM Duty Officer within one hour if fire location is determined to be on BLM ownership

M-UGC MSO – Upper Gold Creek

AGENCY	UNIT	RESPONSE AREA #	RESPONSE AREA NAME	FDRA	RADIO GROUP	CENTER POINT
DNRC	MSO	M-UGC	Upper Gold Creek	Lolo DNRC East	Central Zone	Cow Creek N46° 59.1' x W113° 40.6'

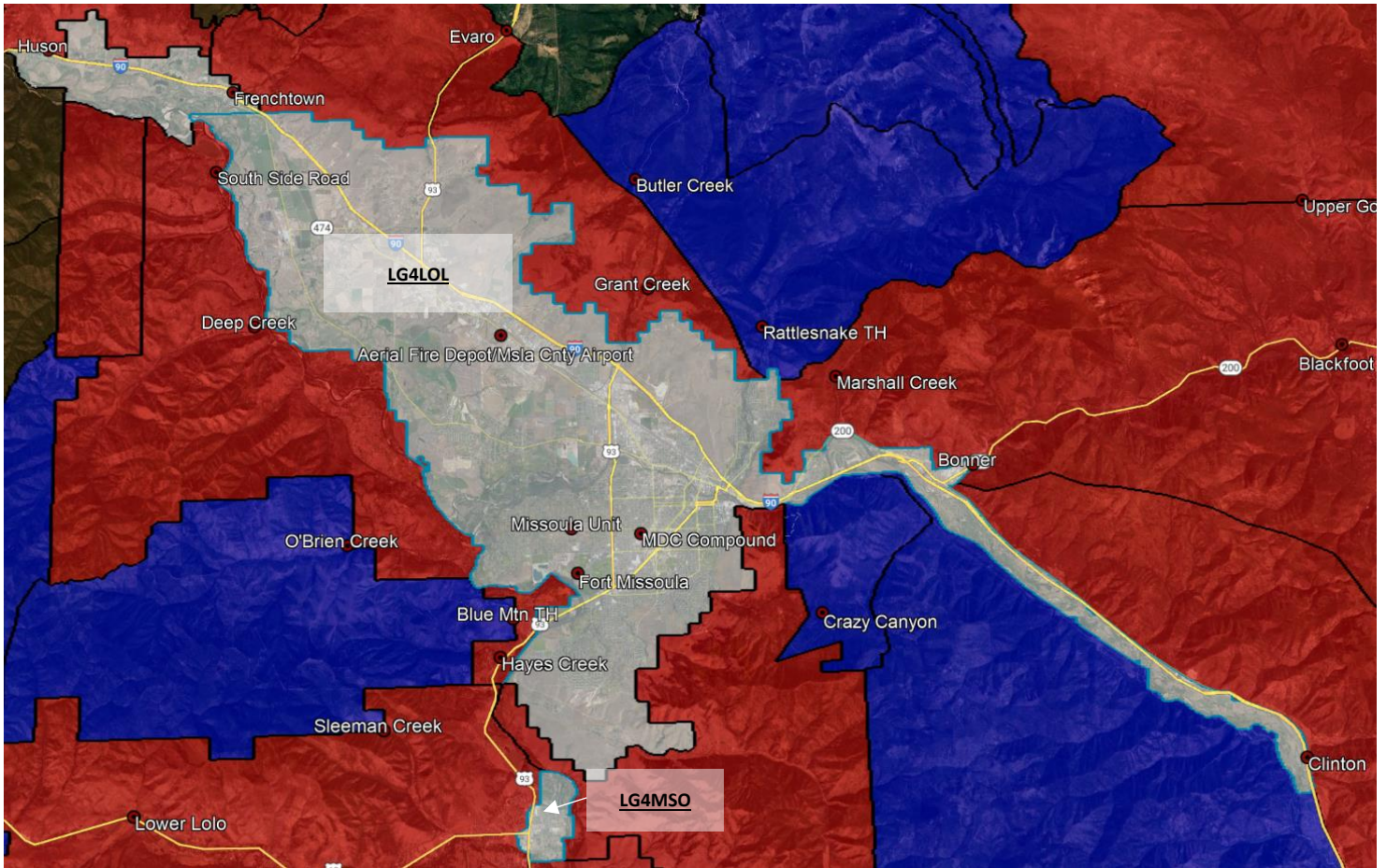
DISPATCH RESPONSE LEVEL	LOW	MODERATE	HIGH
FIRE RESPONSE at minimum	1 Engine	1 Engine	2 Engines

DISPATCH COMMENTS

<p>SHARED BOUNDARY:</p> <ul style="list-style-type: none"> • Confederated Salish and Kootenai Tribes (CSKT - Flathead Agency) • Missoula Ranger District (D3) • Clearwater Unit (CLW)
<p>IF AIRCRAFT IS ORDERED:</p> <ul style="list-style-type: none"> • Dispatch State helicopter first, if available. If no State helicopter is available, dispatch closest available helicopter.
<p>KNOWN HAZARDS:</p> <ul style="list-style-type: none"> • Unknown
<p>NOTIFICATIONS:</p> <ul style="list-style-type: none"> • Missoula Unit Duty Officer • If the smoke report is within 1 nautical mile of district/unit boundary, notify the appropriate Duty Officer • If the smoke report is within 1 nautical mile of CSKT, notify Ronan Dispatch
<p>DUTY OFFICER CONSIDERATIONS:</p> <ul style="list-style-type: none"> • Determine if additional resources are necessary • Make standard notifications • Contact BLM Duty Officer within one hour if fire location is determined to be on BLM ownership

THIS PAGE INTENTIONALLY LEFT BLANK

Central Zone – Missoula County Response (LG04)



LG4LOL Missoula County Response

AGENCY	UNIT	RESPONSE AREA #	RESPONSE AREA NAME	FDRA	RADIO GROUP	CENTER POINT
DNRC	MSO	LG4LOL	-	Lolo DNRC East	Central Zone	Farm Ln & Lakeside Dr (Lolo) N46° 45.5' x W114° 4.4'

DISPATCH RESPONSE LEVEL	LOW	MODERATE	HIGH
FIRE RESPONSE	No Response Unless Requested		

DISPATCH COMMENTS

<p>SHARED BOUNDARY:</p> <ul style="list-style-type: none"> Missoula Ranger District (D3) Ninemile Ranger District (D4) Missoula Unit (MSO)
<p>IF AIRCRAFT IS ORDERED:</p> <ul style="list-style-type: none">
<p>KNOWN HAZARDS:</p> <ul style="list-style-type: none"> Unknown
<p>NOTIFICATIONS:</p> <ul style="list-style-type: none"> Acknowledge page with Missoula 911. If county requests agency assistance contact Missoula Unit (MSO) Duty Officer first If the smoke report is within 1 nautical mile of district/unit boundary, notify the appropriate Duty Officer
<p>DUTY OFFICER CONSIDERATIONS:</p> <ul style="list-style-type: none">

LG4MSO Missoula County Response

AGENCY	UNIT	RESPONSE AREA #	RESPONSE AREA NAME	FDRA	RADIO GROUP	CENTER POINT
DNRC	MSO	LG4MSO	-	Lolo DNRC East	Central Zone	Mullen & Reserve (Missoula) N46° 53.1' x 114° 2.3'

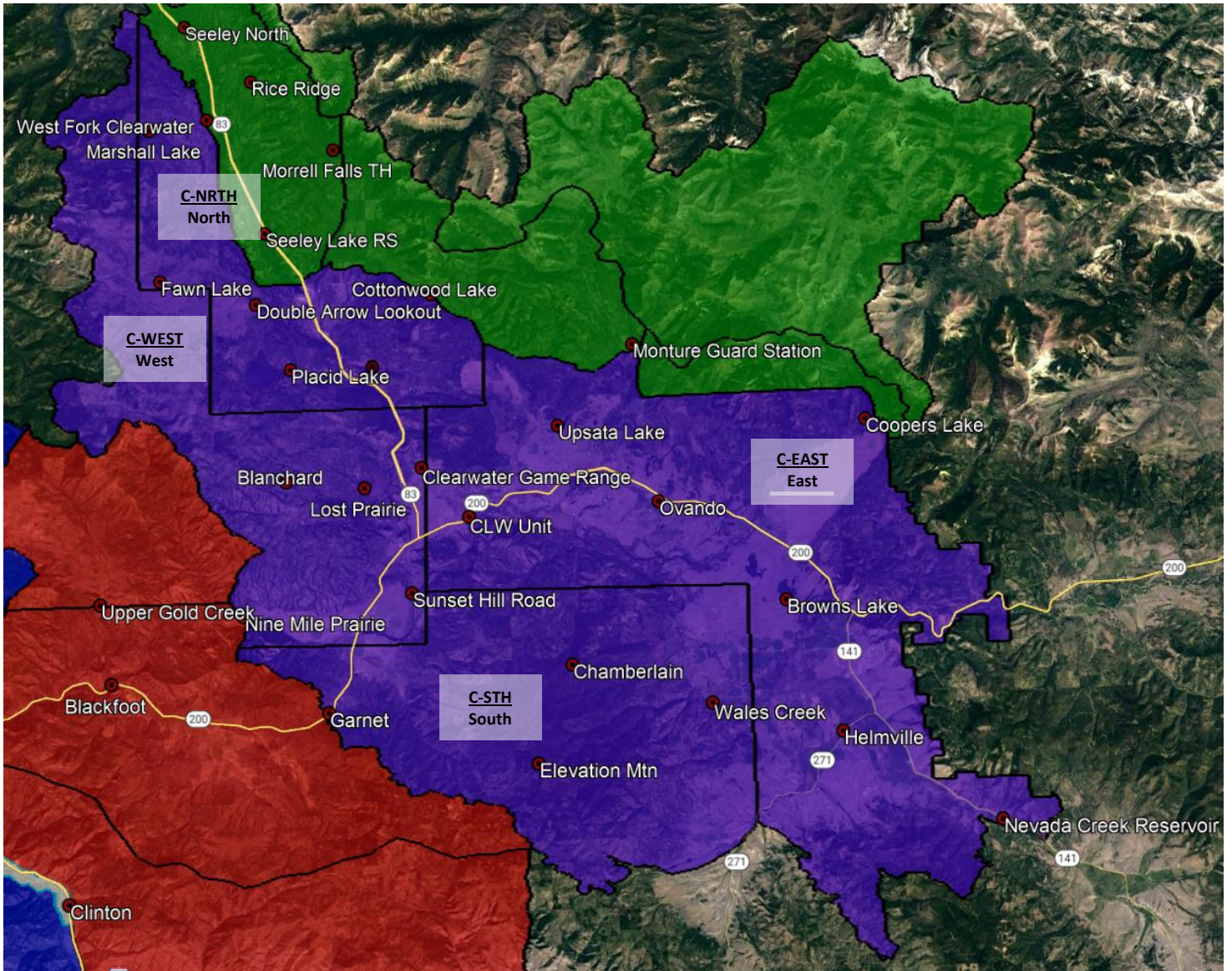
DISPATCH RESPONSE LEVEL	LOW	MODERATE	HIGH
FIRE RESPONSE	No Response Unless Requested		

DISPATCH COMMENTS

<p>SHARED BOUNDARY:</p> <ul style="list-style-type: none"> Missoula Ranger District (D3) Missoula Unit (MSO)
<p>IF AIRCRAFT IS ORDERED:</p> <ul style="list-style-type: none">
<p>KNOWN HAZARDS:</p> <ul style="list-style-type: none"> Unknown
<p>NOTIFICATIONS:</p> <ul style="list-style-type: none"> Acknowledge page with Missoula 911. If county requests agency assistance contact Missoula Unit (MSO) Duty Officer first If the smoke report is within 1 nautical mile of district/unit boundary, notify the appropriate Duty Officer
<p>DUTY OFFICER CONSIDERATIONS:</p> <ul style="list-style-type: none">

East Zone – Clearwater Unit (CLW)

DNRC Southwest Land Office



C-WEST CLW - West

AGENCY	UNIT	RESPONSE AREA #	RESPONSE AREA NAME	FDRA	RADIO GROUP	CENTER POINT
DNRC	CLW	C-WEST	West	Lolo DNRC East	East Zone	Boles Creek N47° 5.7' x W113° 35.1'

DISPATCH RESPONSE LEVEL	LOW	MODERATE	HIGH
FIRE RESPONSE <i>at minimum</i>	1 Engine	1 Engine	1 Engine

DISPATCH COMMENTS

SHARED BOUNDARY:

- Missoula Unit (MSO)
- Confederated Salish and Kootenai Tribes (CSKT - Flathead Agency)
- Flathead National Forest

IF AIRCRAFT IS ORDERED:

- Dispatch State helicopter first, if available. If no State helicopter is available, dispatch closest available helicopter.
- North end of the West Response Area has limited road access – consider helicopter to shuttle crews

KNOWN HAZARDS:

- Unknown

NOTIFICATIONS:

- Unit Duty Officer
- If the smoke report is within 1 nautical mile of district/unit boundary, notify the appropriate Duty Officer
- If the smoke report is within 1 nautical mile of Flathead National Forest, notify Kalispell Dispatch Center
- If the smoke report is within 1 nautical mile of CSKT, notify Ronan Dispatch

DUTY OFFICER CONSIDERATIONS:

- Determine if additional resources are necessary.
- Make standard notifications.
- Condon, MT is located within Missoula County, but it is located on the Flathead National Forest
- North end of the West Response Area has limited road access – consider helicopter to shuttle crews

C-STH CLW - South

AGENCY	UNIT	RESPONSE AREA #	RESPONSE AREA NAME	FDRA	RADIO GROUP	CENTER POINT
DNRC	CLW	C-STH	South	Lolo DNRC East	East Zone	Chamberlain Meadows N46° 53.4' x W113° 15.9'

DISPATCH RESPONSE LEVEL	LOW	MODERATE	HIGH
FIRE RESPONSE at minimum	1 Engine	1 Engine	1 Engine

DISPATCH COMMENTS

<p>SHARED BOUNDARY:</p> <ul style="list-style-type: none"> • Clearwater Unit (CLW) • Beaverhead-Deerlodge National Forest
<p>IF AIRCRAFT IS ORDERED:</p> <ul style="list-style-type: none"> • Dispatch State helicopter first, if available. If no State helicopter is available, dispatch closest available helicopter.
<p>KNOWN HAZARDS:</p> <ul style="list-style-type: none"> • Unknown
<p>NOTIFICATIONS:</p> <ul style="list-style-type: none"> • Unit Duty Officer • If the smoke report is within 1 nautical mile of district/unit boundary, notify the appropriate Duty Officer • If the smoke report is within 1 nautical mile of the Beaverhead-Deerlodge National Forest, notify Dillon Dispatch Center
<p>DUTY OFFICER CONSIDERATIONS:</p> <ul style="list-style-type: none"> • Determine if additional resources are necessary. • Contact BLM Duty Officer if the fire is on BLM ground • Heavy Equipment must be approved by BLM • All fires on BLM over 5 acres require a BLM Resource Advisor

C-EAST CLW - East

AGENCY	UNIT	RESPONSE AREA #	RESPONSE AREA NAME	FDRA	RADIO GROUP	CENTER POINT
DNRC	CLW	C-EAST	East	Lolo DNRC East	East Zone	Ovando, MT N47° 1.2' x W113° 7.9'

DISPATCH RESPONSE LEVEL	LOW	MODERATE	HIGH
FIRE RESPONSE at minimum	1 Engine	2 Engines	2 Engines

DISPATCH COMMENTS

<p>SHARED BOUNDARY:</p> <ul style="list-style-type: none"> • Seeley Ranger District (D6) • Helena-Lewis & Clark National Forest • Beaverhead-Deerlodge National Forest
<p>IF AIRCRAFT IS ORDERED:</p> <ul style="list-style-type: none"> • Dispatch State helicopter first, if available. If no State helicopter is available, dispatch closest available helicopter.
<p>KNOWN HAZARDS:</p> <ul style="list-style-type: none"> • Unknown
<p>NOTIFICATIONS:</p> <ul style="list-style-type: none"> • Unit Duty Officer • If the smoke report is within 1 nautical mile of district/unit boundary, notify the appropriate Duty Officer • If the smoke report is within 1 nautical mile of Helena-Lewis & Clark National Forest, notify Helena Dispatch • If the smoke report is within 1 nautical mile of Beaverhead-Deerlodge National Forest, notify Dillon Dispatch
<p>DUTY OFFICER CONSIDERATIONS:</p> <ul style="list-style-type: none"> • Determine if additional resources are necessary. • Make standard notifications.

C-NRTH CLW - North

AGENCY	UNIT	RESPONSE AREA #	RESPONSE AREA NAME	FDRA	RADIO GROUP	CENTER POINT
DNRC	CLW	C-NRTH	North	Lolo DNRC East	East Zone	Seeley Lake Fire Department N47° 10.7 x W113° 29.1'

DISPATCH RESPONSE LEVEL	LOW	MODERATE	HIGH
FIRE RESPONSE at minimum	1 Engine	1 Engine	2 Engines

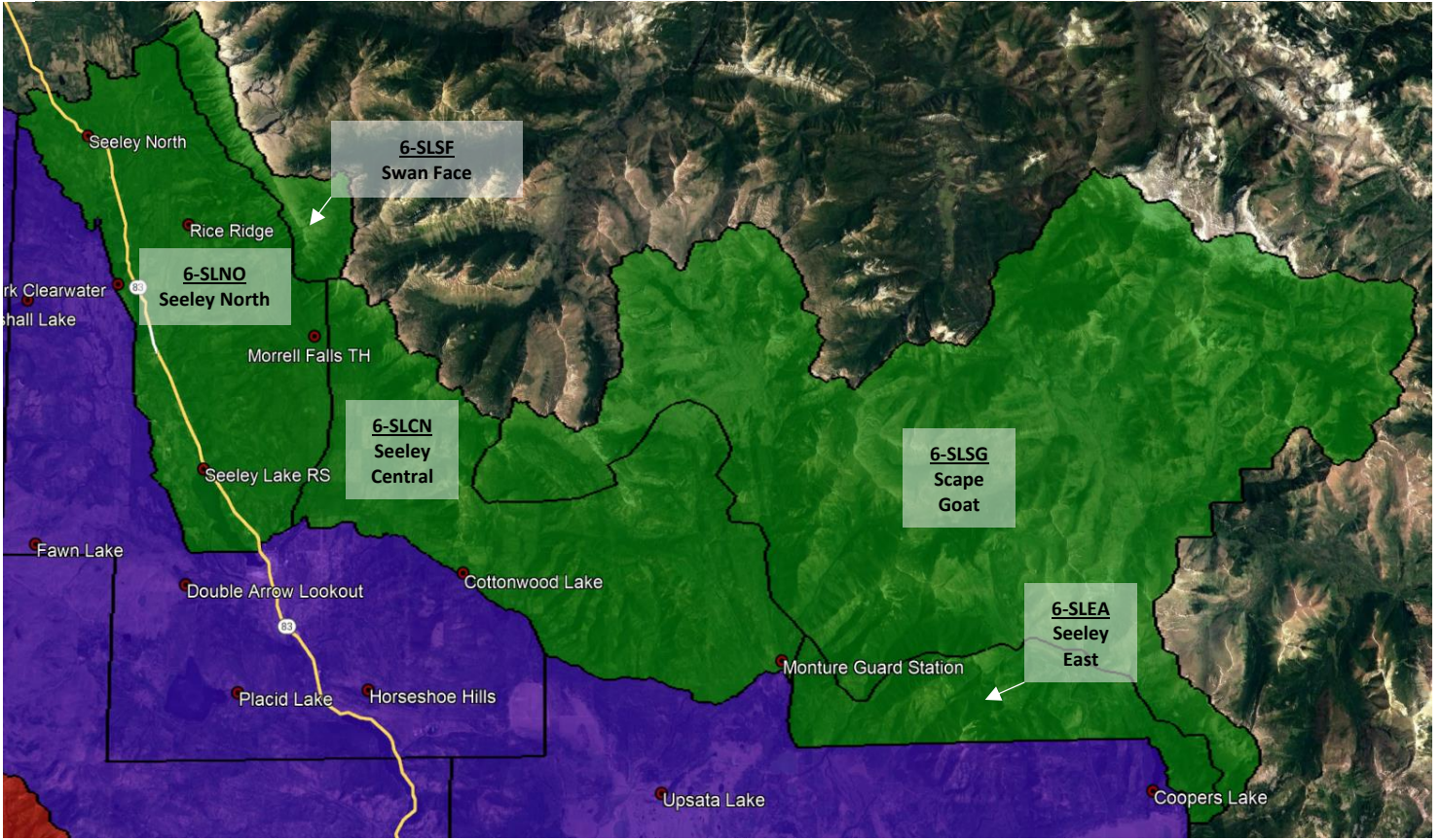
DISPATCH COMMENTS

<p>SHARED BOUNDARY:</p> <ul style="list-style-type: none"> • Seeley Ranger District (D6) • Flathead National Forest
<p>IF AIRCRAFT IS ORDERED:</p> <ul style="list-style-type: none"> • Dispatch State helicopter first, if available. If no State helicopter is available, dispatch closest available helicopter.
<p>KNOWN HAZARDS:</p> <ul style="list-style-type: none"> • Substation 3 Sections west of Placid Lake • High voltage secondary powerlines that feed from Placid Lake through the Jocko
<p>NOTIFICATIONS:</p> <ul style="list-style-type: none"> • Unit Duty Officer • If the smoke report is within 1 nautical mile of district/unit boundary, notify the appropriate Duty Officer • If the smoke report is within 1 nautical mile of Flathead National Forest, notify Kalispell Dispatch
<p>DUTY OFFICER CONSIDERATIONS:</p> <ul style="list-style-type: none"> • Determine if additional resources are necessary. • Make standard notifications.

THIS PAGE INTENTIONALLY LEFT BLANK

East Zone – Seeley Ranger District (D6)

Lolo National Forest



6-SLNO D6 – Seeley North

AGENCY	UNIT	RESPONSE AREA #	RESPONSE AREA NAME	FDRA	RADIO GROUP	CENTER POINT
USFS	D6	6-SLNO	Seeley North	Lolo DNRC East	East Zone	Richmond Peak N47° 19.4' x W113° 30.0'

DISPATCH RESPONSE LEVEL	LOW	MODERATE	HIGH
FIRE RESPONSE at minimum	Notify Duty Officer	1 Engine	1 Engine 1 IA Module

DISPATCH COMMENTS

SHARED BOUNDARY:

- Clearwater Unit (CLW)
- Flathead National Forest

IF AIRCRAFT IS ORDERED:

- Numerous Lakes are available for Dip Sites
- HELIBASE
 - Seeley lake Airport north end (State): N47° 11.202'x W113° 26.753'
 - Fawn Creek helibase (FS): N47° 14.423'x W113° 33.715'

KNOWN HAZARDS:

- Recreationists
- Highway traffic
- Wildlife
- WUI corridor

NOTIFICATIONS:

- District Duty Officer
- If the smoke report is within 1 nautical mile of district/unit boundary, notify the appropriate Duty Officer
- If the smoke report is within 1 nautical mile of Flathead National Forest, notify Kalispell Dispatch

DUTY OFFICER CONSIDERATIONS:

- ACCESS
 - Area is very accessible by vehicles.
- CAMPS
 - For smaller incidents, potential exists to use pre-existing meadows throughout the surrounding area.
 - For larger incidents, several options are available in town and around the area.
- LAND USE AGREEMENTS
 - Contact MDC if land use agreements are needed.
 - Need owner name, address, lat/long of property, phone number, and an email address for dispatch to send resource order
- MAJOR VALUES
 - Major recreation opportunities associated with lakes, trails, and roads
 - WUI
- OTHER CONSIDERATIONS
 - Determine if additional resources are necessary.
 - Make standard notifications.

6-SLSF D6 – Swan Face

AGENCY	UNIT	RESPONSE AREA #	RESPONSE AREA NAME	FDRA	RADIO GROUP	CENTER POINT
USFS	D6	6-SLSF	Swan Face	Lolo DNRC East	East Zone	Fisher Peak N47° 21.9' x W113° 29.7'

DISPATCH RESPONSE LEVEL	LOW	MODERATE	HIGH
FIRE RESPONSE at minimum	Notify Duty Officer	Notify Duty Officer	Notify Duty Officer 1 Fixed Wing Recon

DISPATCH COMMENTS

<p>SHARED BOUNDARY:</p> <ul style="list-style-type: none"> Flathead National Forest
<p>IF AIRCRAFT IS ORDERED:</p> <ul style="list-style-type: none"> Limited dipsites HELIBASE <ul style="list-style-type: none"> Seeley lake Airport north end (State): N47° 11.202'x W113° 26.753' Fawn Creek helibase (FS): N47° 14.423'x W113° 33.715'
<p>KNOWN HAZARDS:</p> <ul style="list-style-type: none"> Recreationists Wildlife
<p>NOTIFICATIONS:</p> <ul style="list-style-type: none"> District Duty Officer If the smoke report is within 1 nautical mile of Flathead National Forest, notify Kalispell Dispatch Center
<p>DUTY OFFICER CONSIDERATIONS:</p> <ul style="list-style-type: none"> ACCESS <ul style="list-style-type: none"> Area is very inaccessible by vehicles. Helicopters and Fixed wing are primary CAMPS <ul style="list-style-type: none"> For smaller incidents, potential exists to use pre-existing meadows throughout the surrounding area. For larger incidents, several options are available in town and around the area. LAND USE AGREEMENTS <ul style="list-style-type: none"> Contact MDC if land use agreements are needed. Need owner name, address, lat/long of property, phone number, and an email address for dispatch to send resource order MAJOR VALUES <ul style="list-style-type: none"> Major recreation opportunities associated with lakes, trails, and roads Highly Visible to the public OTHER CONSIDERATIONS <ul style="list-style-type: none"> Determine if additional resources are necessary. Make standard notifications.

6-SLCN D6 – Seeley Central

AGENCY	UNIT	RESPONSE AREA #	RESPONSE AREA NAME	FDRA	RADIO GROUP	CENTER POINT
USFS	D6	6-SLCN	Seeley Central	Lolo DNRC East	East Zone	Morrell Lookout N47° 11.4' x W113° 21.5'

DISPATCH RESPONSE LEVEL	LOW	MODERATE	HIGH
FIRE RESPONSE at minimum	Notify Duty Officer	1 Engine	1 Engine

DISPATCH COMMENTS

SHARED BOUNDARY:

- Clearwater Unit (CLW)
- Flathead National Forest

IF AIRCRAFT IS ORDERED:

- DIPSITES
 - Cottonwood Lakes (FS) N47° 9.925'x W113° 20.990'
 - Otherwise, limited dipsites in the area
- HELIBASE
 - Seeley lake Airport north end (State): N47° 11.202'x W113° 26.753'
 - Monture Guard Station (FS): N47° 7.663'x W113° 9.156'
 - Fawn Creek helibase (FS): N47° 14.423'x W113° 33.715'

KNOWN HAZARDS:

- Recreationists
- High use traffic
- Wildlife
- WUI corridor

NOTIFICATIONS:

- District Duty Officer
- If the smoke report is within 1 nautical mile of Flathead National Forest, notify Kalispell Dispatch Center

DUTY OFFICER CONSIDERATIONS:

- ACCESS
 - Area is accessible by vehicles.
- CAMPS
 - For smaller incidents, potential exists to use pre-existing meadows throughout the surrounding area.
 - Fawn Creek helibase (FS): N47° 14.423'x W113° 33.715'
 - For larger incidents, several options are available in town and around the area.
- LAND USE AGREEMENTS
 - Contact MDC if land use agreements are needed.
 - Need owner name, address, lat/long of property, phone number, and an email address for dispatch to send resource order
- MAJOR VALUES
 - Major recreation opportunities associated with lakes, trails, and roads
 - WUI
- OTHER CONSIDERATIONS
 - Determine if additional resources are necessary.
 - Make standard notifications.

6-SLSG D6 – Scape Goat

AGENCY	UNIT	RESPONSE AREA #	RESPONSE AREA NAME	FDRA	RADIO GROUP	CENTER POINT
USFS	D6	6-SLSG	Scape Goat	Lolo DNRC East	East Zone	Lake Mountain N47° 10.1' x -112° 58.0'

DISPATCH RESPONSE LEVEL	LOW	MODERATE	HIGH
FIRE RESPONSE at minimum	Notify Duty Officer	Notify Duty Officer	1 Fixed wing Recon Notify Duty Officer

DISPATCH COMMENTS

SHARED BOUNDARY:

- Helena-Lewis & Clark National Forest
- Flathead National Forest

IF AIRCRAFT IS ORDERED:

- Limited dipsites
- HELIBASE
 - Seeley lake Airport north end (State): N47° 11.202'x W113° 26.753'
 - Monture Guard Station (FS): N47° 7.663'x W113° 9.156'
 - North Fork Trail Head (FS): N47° 7.177'x W112° 57.951'
 - Numerous options on private lands to south

KNOWN HAZARDS:

- Recreationists - primarily stock and outfitters
- Wildlife

NOTIFICATIONS:

- District Duty Officer
- If smoke report is within 1 nautical mile of Helena-Lewis Clark National Forest, notify Helena Dispatch
- If smoke report is within 1 nautical mile of Flathead National Forest, notify Kalispell Dispatch

DUTY OFFICER CONSIDERATIONS:

- ACCESS
 - Area is very inaccessible by vehicles.
 - Coopers Lake area and North Fork Trailhead have good vehicle access.
 - Helicopters and fixed wing are the primary
- CAMPS
 - Camp locations are limited on FS Lands. Options may be available to the south on DNRC and Private
 - Section 16 State Land Camp site (State) : N47° 3.334 x W113° 7.384
 - Monture South pasture (FS): N47° 7.420 x W113° 9.142
- LAND USE AGREEMENTS
 - Contact MDC if land use agreements are needed.
 - Need owner name, address, lat/long of property, phone number, and an email address for dispatch to send resource order
- MAJOR VALUES
 - Recreation opportunities associated with lakes, trails, and roads
 - WUI
 - Lake Mountain Repeater
- OTHER CONSIDERATIONS
 - Determine if additional resources are necessary.
 - Make standard notifications.

6-SLEA D6 – Seeley East

AGENCY	UNIT	RESPONSE AREA #	RESPONSE AREA NAME	FDRA	RADIO GROUP	CENTER POINT
USFS	D6	6-SLEA	Seeley East	Lolo DNRC East	East Zone	McCabe Point N47° 7.0' x W113°3.7'

DISPATCH RESPONSE LEVEL	LOW	MODERATE	HIGH
FIRE RESPONSE at minimum	Notify Duty Officer	1 Engine	1 Engine 1 IA Module

DISPATCH COMMENTS

SHARED BOUNDARY:

- Clearwater Unit (CLW)
- Helena-Lewis & Clark National Forest

IF AIRCRAFT IS ORDERED:

- DIPSITES – Limited
 - Coopers Lake (FS & Private) N47° 4.789'x W112° 55.077'
 - Bear Lake (FS) N47° 5.991'x W112° 56.304'
- HELIBASE
 - Seeley lake Airport north end (State): N47° 11.202'x W113° 26.753'
 - Monture Guard Station (FS): N47° 7.663'x W113° 9.156'
 - North Fork Trail Head (FS): N47° 7.177'x W112° 57.951'
 - Numerous options on private lands to south

KNOWN HAZARDS:

- Recreationists. High use traffic
- Wildlife
- WUI corridor

NOTIFICATIONS:

- District Duty Officer
- Clearwater Unit Duty Officer

DUTY OFFICER CONSIDERATIONS:

- ACCESS
 - Area is mostly inaccessible by vehicles.
 - Coopers Lake area and North Fork Trailhead are good vehicle access areas. A few other secondary roads may provide some access, helicopters are a good choice
- CAMPS
 - Camp locations are limited on FS Lands. Options may be available to the south on DNRC and Private
 - Section 16 state land camp site (State): N47° 3.334'x W113° 7.384'
 - Monture south pasture (FS): N47° 7.420'x W113° 9.142'
- LAND USE AGREEMENTS
 - Contact MDC if land use agreements are needed.
 - Need owner name, address, lat/long of property, phone number, and an email address for dispatch to send resource order
- MAJOR VALUES
 - Recreation opportunities associated with lakes, trails, and roads
 - WUI
- OTHER CONSIDERATIONS
 - Determine if additional resources are necessary.
 - Make standard notifications.

APPENDICES

THIS PAGE INTENTIONALLY LEFT BLANK

Appendix A - Call Signs

Call signs, when used properly, can aide in the quick identification of level of experience and/or qualifications for dispatchers, incident commanders, management, etc. In order for RunCards, and dispatching in general, to be efficient and set-up for success, call signs must be used correctly.

When to use call-signs:

- An individual mobilizing *separately* from an engine, crew, module, or chase truck
“SFF 71 in service to . . .”
- An individual or group of individuals that has the ability to break away from each other, even if they are traveling together
“Mod 6-A, 6-B, and CAPT-63 in service to . . .” rather than “CAPT-63 with 8”
- If staffing has changed while in the field, update staffing of an engine, crew, module, or chase truck *via radio*
“E-641 is now staffed with Operator 41, AFEO 41, SFF 41, and BAT 41”
Note: individuals without a call sign will use their last name when updating staffing via the radio
- When released from an incident specific position (i.e., Incident Commander, Task Force, Division, etc.)

When not to use call-signs:

- An individual *attached* to an engine, crew, module, or chase truck
Do not say: “AFEO-31, Missoula Dispatch, please show MOD3-C in service to . . .”
Note: if you are attached to the engine, crew, module, or chase truck, do not call in with your individual overhead call sign – call in with the engine, crew, module, or chase truck call sign unless the individual has the ability to break away from the engine, crew, module, or chase truck
- An individual attached to an incident in which they have been assigned an incident specific position (i.e., Incident Commander, Task Force, Division, etc.)
“CAPT 51 on scene of the Orange Fire. I will be the Orange IC.”
“Orange IC, Missoula Dispatch. . .”

Other Call Signs

- Engines must have at least 2 personnel (3 for Type 3 engines), with one of those being an Engine Boss
- Initial Attack Modules (IA Mods) must have at least one Incident Commander (IC) of any level
- Chase Trucks staffed separate of an Engine do *not* have a qualified IC of any level

THIS PAGE INTENTIONALLY LEFT BLANK

Appendix B – Resource Statusing

When a resource’s location and/or status changes, accuracy is pertinent to the success of RunCards, and dispatching in general. Please use the following as a guideline when changing your status while in the field.

- If there is a large group of varying resources going to the same location or incident, it is preferred to have one point of contact to avoid prolonged and/or unnecessary radio traffic.
- When changing locations, please call in with the Dispatch Location first, followed with specific location information
“Show E-1165 in service to the Bonner Dispatch Location, working in the Olsen Mountain area for the afternoon”
- When enroute to Project Work, Prescribed Fire, Smoke Report, or Wildfire, please call in when you or your resource in responding and has arrived on scene

The table below is a breakdown of the status options used by Missoula Dispatch in WildCAD. These status options are color and text-style coded in WildCAD and provide a visual cue to the dispatchers of any resource’s status, as well as serving as the primary way of resource tracking.

Status	Definition	Available for Dispatch (Initial Attack)?
Available Quarters	Available, at home station <i>Note: resources may not have access have to a radio while in the station.</i>	Yes
Available	Not at home station, but available elsewhere	Yes
In Service	“Wheels rolling” – enroute to a location not associated with an incident	Yes
Committed	Attached to an incident. Not yet responding.	No*
Responding	Enroute to an incident	No*
On Scene	Arrived at incident	No*
Available at Incident	On scene of incident, but available for another assignment	Yes
Returning	Returning to quarters from incident -OR- leaving an incident to another non-incident location	Yes
Out of Service	Unstaffed or unavailable for a variety of reasons	No*

**Resources can be diverted for higher priority incidents if requested by Duty Officers*

Appendix C – Arrival Report

When a resource is the first to arrive on scene of a wildland fire, the following information is requested upon arrival. This information will aid MDC in dispatching additional resources, as well as assisting in prioritizing incidents when multiple wildland fires may be present.

1. Fire Name
2. Incident Commander and trainee
3. Updated Lat/Long (does not have to be the point of origin)
4. Values at Risk (Number of each and approximate time/distance away – structures, timber, etc.)
5. Estimated size
6. Additional resource needs (if any)
7. Current fire behavior

Follow up with a full size up as soon as resources are able.

THIS PAGE INTENTIONALLY LEFT BLANK

Appendix D – Dispatch RunCard Script

1. Group select all applicable frequencies
2. **ANNOUNCE** “All resources stand by for smoke report”
3. **PAUSE FOR 5 SECONDS**
4. **TRANSMIT** “SIREN” alert tone for 5 seconds
5. **PAUSE FOR 5 SECONDS**
6. For smoke reports:
 - a. **ANNOUNCE:** “ _____ please respond to incident # _____
(RESOURCES – PER RUNCARD RESPONSE)

 - for a smoke report in the _____.
(GEOGRAPHIC LOCATION)

 - Approximate Lat/Long: _____ .

 - This will be a _____ response to the _____ Response Area.
(DISPATCH RESPONSE LEVEL) (UNIT/DISTRICT NAME, FOLLOWED BY RESPONSE AREA NAME)

 - BREAK.”**

 - b. **PAUSE FOR 5 SECONDS**

 - c. **ANNOUNCE:** “Command Channel will be on _____.

Only announce if aircraft is being launched: Air-to-Ground is _____.

Reporting party is _____ . *Do not provide public’s name or contact information over the radio!*
(PUBLIC, LOOKOUT TOWER, ETC.)

Any Additional information: _____ .
(HAZARDS, ACCESS, DETECTION OVERHEAD, SMOKE COLOR, FIRE BEHAVIOR, ETC.)

STANDBY for check back.”

 - d. **VERIFY** each resource dispatched has copied the transmission and provides a status update
 - i. “E-631, did you copy dispatch?” “E-631 copies. Show us enroute.”

 - e. **FOLLOW UP** with phone call(s) to the appropriate Duty Officer(s)

THIS PAGE INTENTIONALLY LEFT BLANK